

ELAD FDM-DUOr

Dual Mode SDR Receiver



USER MANUAL

Contents

Revision History	4
1 Overview	5
1.1 Notice	5
1.2 Firmware versions	5
1.3 Introduction	5
1.3.1 Main Features	5
1.3.2 Block Diagram	6
1.4 Precautions	7
2 Panels Description	8
2.1 Front Panel Description	8
2.2 Rear Panel Description	9
3 Preselectors Description	11
3.1 Preselectors Slots	11
3.2 Preselectors List	12
3.3 Modify the preselectors configuration	13
4 LCD Display	16
5 Quick Start	18
5.1 First of all	18
5.2 Reset	19
5.3 A first trip	19
6 User Interface	22
6.1 VFO Mode	22
6.1.1 Tuning	22
6.1.2 E1 Receiver Settings	23
6.1.3 E2 Receiver Settings	23
6.1.4 Switch VFO	23
6.1.5 Store VFO to memory	23
6.1.6 "QuickMem" Mode	24
6.1.7 VFO-A = VFO-B	24
6.1.8 Change Operating Mode	24
6.1.9 "QuickStep"	24
6.2 MEM Mode	25
6.2.1 Select and edit a memory	25

- 6.2.2 Delete a memory 25
- 6.2.3 Set memory to VFO..... 25
- 6.2.4 Change the memory display mode 26
- 6.3 Knobs Functions..... 27
- 6.4 Keys Functions 28
- 6.5 Settings Menus List 29
 - 6.5.1 Frequency visualization offset menu 31
- 7 CAT Remote Control 32
 - 7.1 General Specifications 32
 - 7.2 Commands Types..... 32
 - 7.3 Cat Commands..... 33
 - 7.3.1 Active commands list 33
 - 7.3.2 Active commands tables 35
 - 7.3.3 Compatibility commands 49
- 8 Software & Drivers Installation..... 55
 - 8.1 FDM-SW2 Software 55
 - 8.1.1 First-time install 55
 - 8.1.2 Update an existing version..... 55
 - 8.2 RX USB Driver..... 56
 - 8.2.1 First driver installation 56
 - 8.2.2 Driver installation check 58
 - 8.2.3 Manual driver update 59
 - 8.3 CAT USB Driver..... 62
- 9 Firmware Update..... 63
- 10 Technical Specifications 64
- Product Warranty 65
- Declaration of Conformity (EC)..... 66

Revision History

Revision	Date	Description
Rev 1.1	04/2016	<ul style="list-style-type: none"> Added the OW cat command description. Updated the MA, MB and RF cat commands descriptions with CWR information. Updated firmware versions table.
Rev 1.2	06/2016	<ul style="list-style-type: none"> Updated the picture in the section 5.1.2 - E1 Receiver Settings with the AGC Threshold parameter. Updated the section 8.4 - UI firmware update. Updated the firmware versions table.
Rev 1.3	01/2017	<ul style="list-style-type: none"> Moved the preselectors description in section 3 - Preselectors Description. Updated the preselectors description. Updated firmware versions table.
Rev 1.4	11/2017	<ul style="list-style-type: none"> Added the TH cat command description. Moved Firmware Update section in another document. Added Product Warranty. Updated firmware versions table.
Rev 1.5	12/2017	<ul style="list-style-type: none"> Added the FM MODE menu description, see 6.1.8 - Change Operating Mode and 6.5 - Settings Menu List. Updated firmware versions table.
Rev 1.6	05/2018	<ul style="list-style-type: none"> Added the VE cat command description. Updated firmware versions table.
Rev 1.7	06/2018	<ul style="list-style-type: none"> Updated the VM cat command description. Updated firmware versions table.
Rev 1.8	01/2019	<ul style="list-style-type: none"> Reviewed 6.5 - Settings Menus List. Added cat commands descriptions : BH, BR, DF, ET, FM, HT, QS, RN, SA, SI, and UU. Updated firmware versions table.
Rev 1.9	02/2019	<ul style="list-style-type: none"> Reviewed cat commands descriptions. Updated firmware versions table.
Rev 1.10	09/2020	<ul style="list-style-type: none"> Reviewed section 8 - Software & Drivers Installation. Fixed cat commands descriptions (FT, MA, MB, MR, MW). Updated firmware versions table.
Rev 1.11	09/2021	<ul style="list-style-type: none"> Updated links and Declaration of Conformity.

1 Overview

1.1 Notice

Amateur radio regulations vary from country to country. Confirm your local amateur radio regulations and requirements before operating the ELAD FDM-DUOr.

1.2 Firmware versions

The features described in this manual refers the following firmware versions :

RX Demodulator	User Interface	USB Interface	FPGA
Ver. 1.51 Date: 06/09/2020	Ver. 4.87 Date: 02/06/2019	Ver. 4.09 Date: 05/28/2015	Ver. 2.00 Date: 07/30/2014

1.3 Introduction

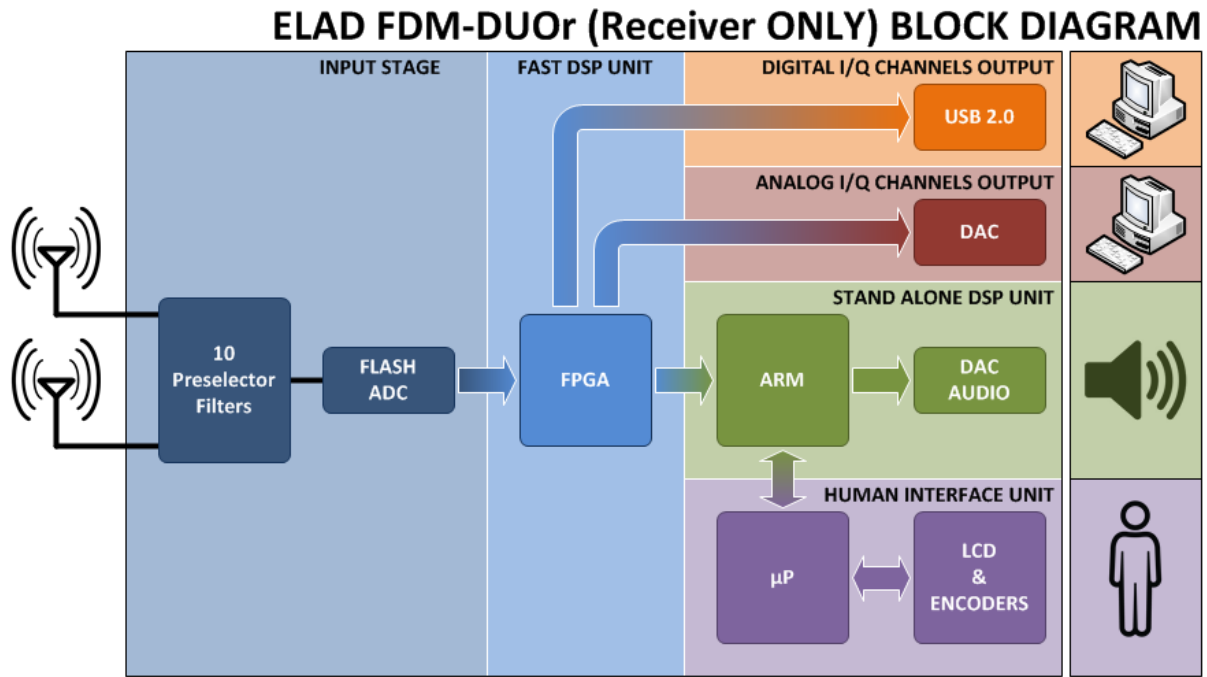
Thank you for choosing the FDM-DUOr. It is an innovative dual mode SDR (Software Defined Radio) receiver covering the frequency range from 9kHz to 54MHz. The FDM-DUOr can be used like a standard receiver in stand-alone mode or in remote mode to exploit the full potential of the ELAD FDM-SW2 software. The FDM-DUOr can still be connected to the FDM-SW2 software when it works in "stand-alone" mode.

NOTE: For detailed information about ELAD FDM-SW2 software refer to user manual available at <https://www.eladit.com/en/download?path=sdr%2FFDM-sw2+Software%2FDoc>

1.3.1 Main Features

- Frequency range: 9kHz to 54MHz in direct sampling mode.
- Two antenna connectors (one with a 54MHz low-pass filter, the other one without).
- 10 slots for preselectors (filters). Settable by the user with the FDM-SW2 software.
- Operating modes: CW, CWR, LSB, USB, AM and FM.
- ADC Linear LTC2165,16bit @122.88MHz.
- FPGA Spartan 6 XC6SLX25 + Serial Flash for stand-alone mode.
- Stand-alone RX demodulator with STM32F4 ARM floating point μ Controller.
- LPC1766 Cortex M3 for LCD & Keyboard control.
- Clocking source Si5338 driven by 10MHz TCXO or external reference input.
- CAT USB interface with FTDI controller.

1.3.2 Block Diagram



© 2015 ELAD S.r.l.

1.4 Precautions

- Connect the receiver only to a power source described in this manual.
- Take care when plugging-in cables, avoid applying sideways pressure that might damage the connectors.
- Avoid operating in wet conditions.
- For better performance and safety, connect the receiver to good earth ground using a short, heavy, braided cable.
- Ground all outdoor antennas for this receiver using approved methods. Grounding helps protect against voltage surges caused by lightning. It also reduces the chance of build-up of static charge.

2 Panels Description

2.1 Front Panel Description



1 - LCD Display

See [LCD Display](#).

2 - E1 Knob

Available functions : settings of audio volume, squelch for FM, gain control (AGC), noise reduction (NR), noise blanker (NB) and auto notch (AN). See [Knobs functions](#) for more information about knobs use.

3 - Main Knob

Available functions : VFO tuning, memory selection in MEM mode, step selection in VFO mode. See [Knobs functions](#) for more information about knobs use.

4 - Main audio output for speakers and headphones (front panel)

5 - Auxiliary audio output

6 - E2 Knob

Available functions : settings of reception filters, CW pitch value, and RIT value. See [Knobs functions](#) for more information about knobs use.

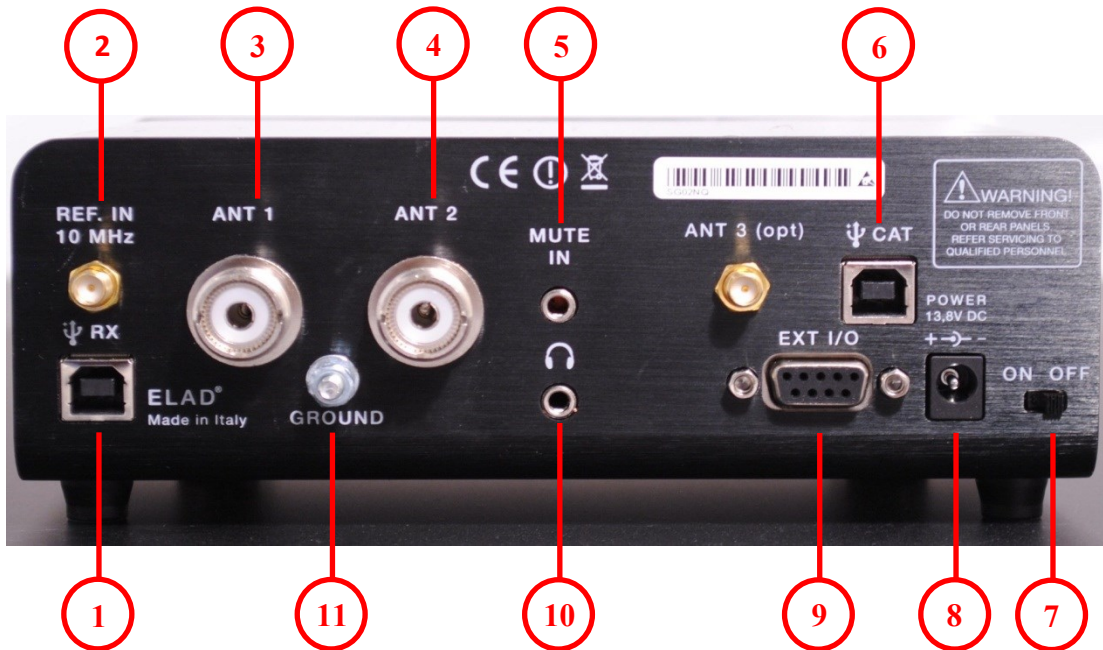
7 - MODE and MENU buttons

Operating mode selection (AM, CW, ...). Tune mode activation. “QuickStep” function activation. Access to the setup menu. See [Keys functions](#) for more information about keys use.

8 - VFO and MEM buttons

Basic VFO and memory operations. See [Keys functions](#) for more information about keys use.

2.2 Rear Panel Description



1 - USB Receiver Data Connector

USB 2.0 port. Connect it to computer to use the SW2 software. Please use the supplied cable.

2 - Frequency Reference Input

SMA 50 Ohm connector. Apply an 10MHz 0dBm signal.

3 - Input Antenna 1 Connector

M-type 50 Ohm connector. Connected to the integrated low pass filter.

4 - Input Antenna 2 Connector

M-type 50 Ohm connector. Not connected to the integrated low pass filter.

5 - Mute Input Connector

3.5mm stereo jack connector.



RING: do not connect (reserved for future use).

TIP : mute input, connect to GROUND to activate the mute functionality.

6 - CAT USB Serial Port

USB 2.0 port. Connect it to the computer to manage the FDM-DUOr through the CAT (Computer Aided Transceiver) protocol.

7 - Power Switch

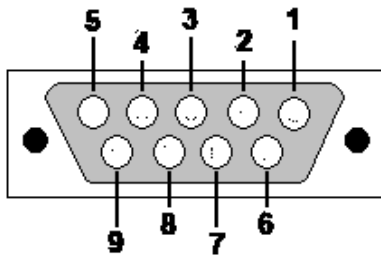
Turns on or off the FDM-DUOr.

8 - Power Connector

Voltage to apply : 13.8V. Maximum current consumption : 0.6A DC.

9 - Expansion Port

DB9 connector for external hardware. **THIS IS NOT A STANDARD SERIAL PORT.**



- Pin 1: SPI Latch
- Pin 2: I2C SCL
- Pin 3: SPI Clock
- Pin 4: I2C SDA
- Pin 5: Ground
- Pin 6: DUOr TX
- Pin 7: DUOr RX
- Pin 8: SPI Data
- Pin 9: +5V

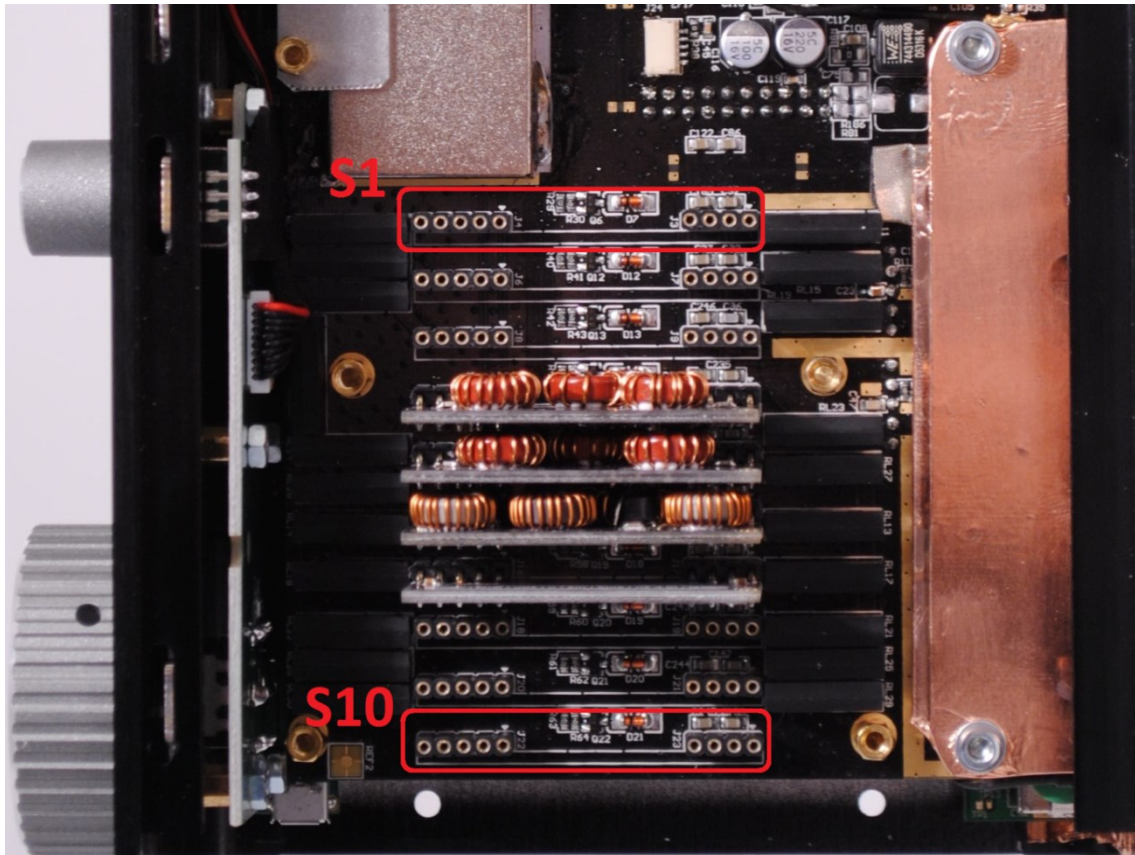
10 – Main audio output for speakers and headphones (rear panel)**11 – Ground Connector**

For better performance and safety, connect it to an earth ground using a short and wide cable.

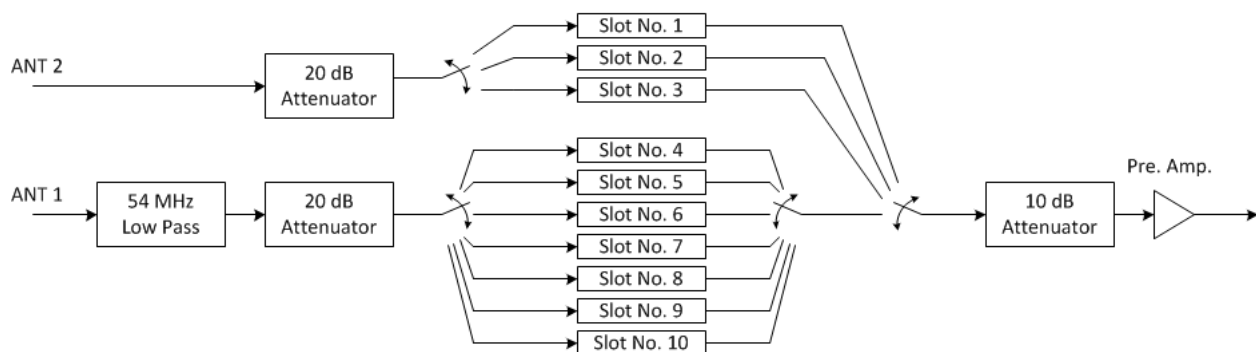
3 Preselectors Description

3.1 Preselectors Slots

The FDM-DUOr has ten slots for preselector filters, also simply called preselectors or filters. To change the preselectors configuration remove the top cover, identify the appropriate slot and insert or remove the preselector board. The picture below shows their position and numbering. Use the FDM-DUOr manager in the FDM-SW2 software (as described in **3.3 - Modify the preselectors configuration**) to send the preselectors configuration to the FDM-DUOr.



As shown in the FDM-DUOr front end block diagram below, use slots 4 to 10 for HF (under Antenna 1) and slots 1 to 3 if using Antenna 2 (no low pass filter).

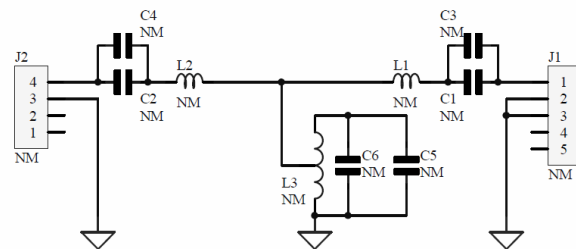
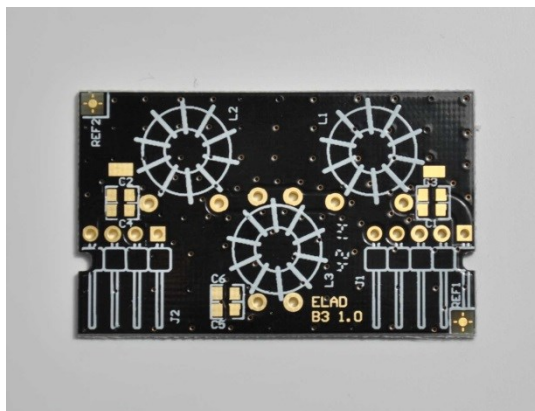


3.2 Preselectors List

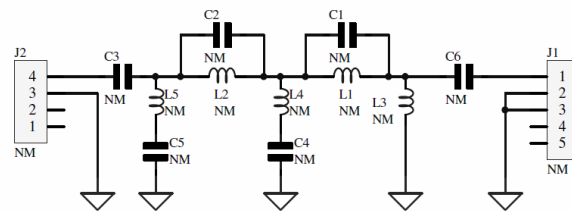
Actual available preselectors (*)			
Code	Description	Code	Description
FHP05M-1	High Pass 500 kHz	FBP17-1	Band Pass 17 m
FHP1M7-1	High Pass 1700 kHz	FBP15-1	Band Pass 15 m
FBP160-1	Band Pass 160 m	FBP12-1	Band Pass 12 m
FBP80-1	Band Pass 80 m	FBPY	Bypass module (**)
FBP40-1	Band Pass 40 m	FPCB-B3	Empty module for self-made filters
FBP30-1	Band Pass 30 m	FPCB-H5	Empty module for self-made filters
FBP20-1	Band Pass 20 m		

(*) Please refer to ELAD website for updated list of preselector modules.

FPCB-B3 Preselector Schematic

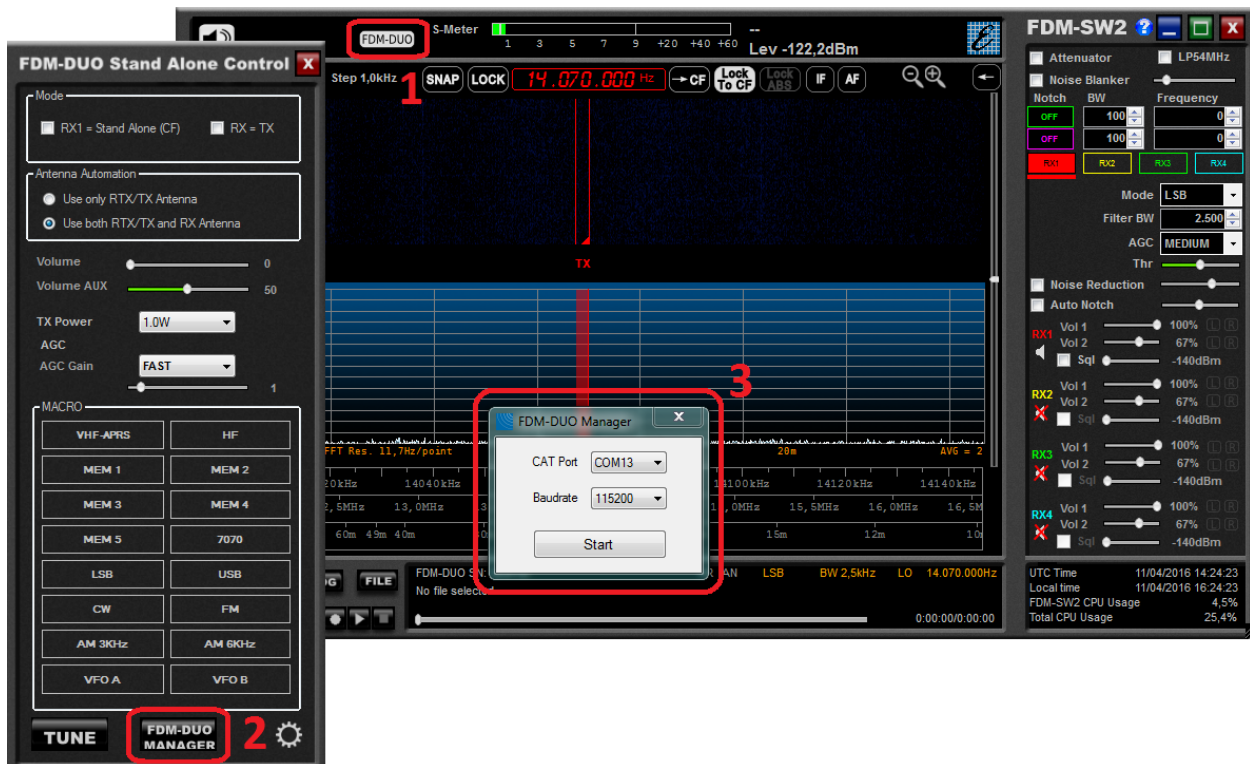


FPCB-H5 Preselector Schematic



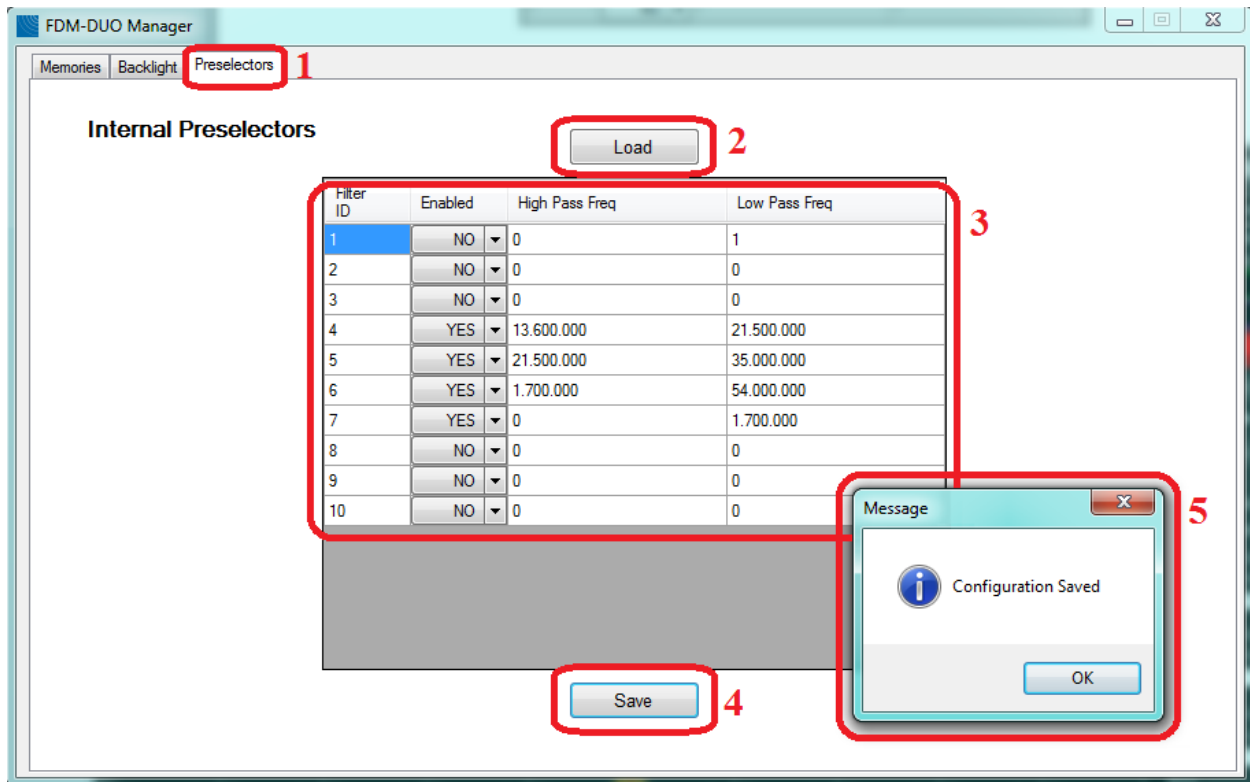
3.3 Modify the preselectors configuration

The filters configuration is stored in the FDM-DUOr internal memory. To modify and save this configuration use the “FDM-DUO Manager” feature in the ELAD FDM-SW2 SDR Software.



1. Click on the “FDM-DUO” button.
2. In the “FDM-DUO control panel”, click on the “FDM-DUO MANAGER” button.
3. Choose the right COM port, the right baud rate (menu 70 of the FDM-DUOr) and click on “Start”. You need to connect the CAT USB port of the FDM-DUOr to the computer to perform this operation.

The loading process may take some time, depending on the baud rate selected.



Then.

1. Select the “Preselectors” tab.
2. The “Load” button allows you to retrieve from the FDM-DUOr the current configuration.
3. Set a filter. The settings table is formed by 10 rows, one for each filter slot of the FDM-DUOr. Each row contains 4 fields :
 - the filter ID / slot number : from 1 to 10,
 - the state of the filter/slot : enabled or not,
 - the beginning frequency of the filter use, otherwise called “high pass frequency”,
 - the end frequency of the filter use, otherwise called “low pass frequency”.
 For each row choose the “Enabled” state and if enabled, enter the desired High Pass and Low Pass frequencies which specify the activation band of the filter.
4. Press the “Save” button to store the configuration in the FDM-DUOr internal memory.
5. A message box appears to confirm the operation or indicate a negative outcome.

Some rules to keep in mind :

- the frequency to enter is in Hertz,
- the High Pass frequency must be strictly slower than the Low Pass frequency,
- in the same way the Low Pass frequency must be strictly higher than the High Pass frequency,
- in case of use of the FBPY bypass module, insert it to the last used slot.

For example, considering the default configuration of the FDM-DUOr which is :

Slot number	Antenna	Preselector code	Frequency range
1	ANT 2	-	-
2	ANT 2	-	-
3	ANT 2	-	-
4	ANT 1	FBP-13/21	13.6MHz – 21.5MHz
5	ANT 1	FBP2135	21.5MHz – 35.0MHz
6	ANT 1	FHP1M7-1	1.7MHz – 54MHz
7	ANT 1	FBPY	0Hz – 1.7MHz
8	ANT 1	-	-
9	ANT 1	-	-
10	ANT 1	-	-

To select the right filter the FDM-DUOr analyses the configuration following the ascending order of the slots. If the current tuning frequency is inside the frequency range the filter is selected, if not it passes to the next slot. This mean that filters that have more bandwidth should be left last. It is recommended to place the bypass module in the last used slot and to enable it in the frequency range which is not covered by the others filter modules.

Some cases with the above configuration :

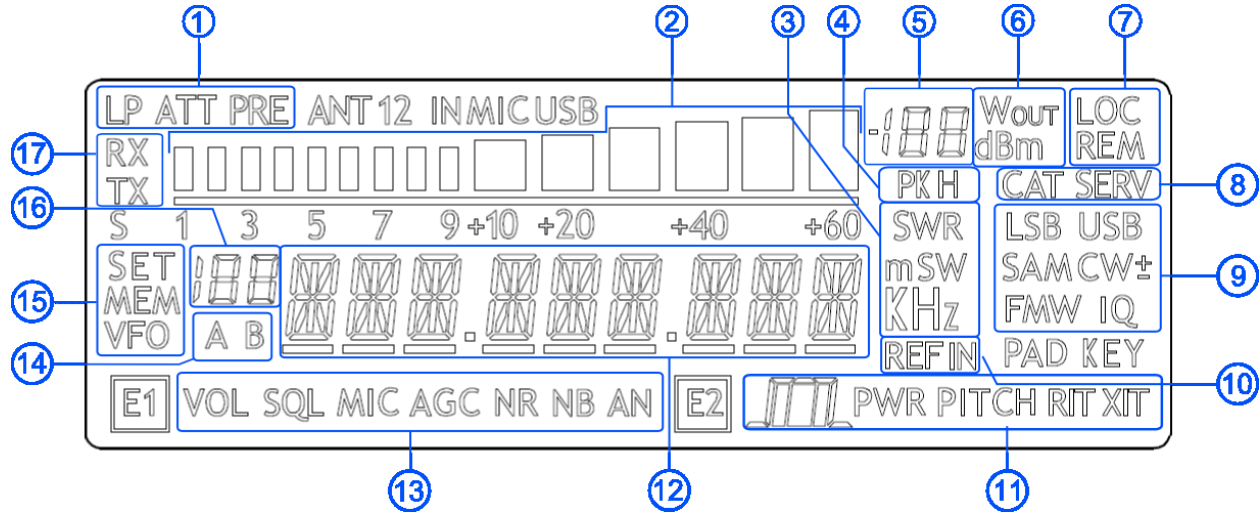
- tuning frequency set to 14MHz : the filter on the fourth slot is selected,
- tuning frequency set to 28MHz : the filter on the fifth slot is selected,
- tuning frequency set to 52MHz : the filter on the sixth slot is selected,
- tuning frequency set to 1MHz : the filter on the seventh slot is selected.

If you want to mount a new filter, for example FBP-40-1 with the frequency range 7MHz – 7.45MHz, it is better to insert it in slot 4 and move all the other filters by one slot.

So the configuration should become :

Slot number	Antenna	Preselector code	Frequency range
1	ANT 2	-	-
2	ANT 2	-	-
3	ANT 2	-	-
4	ANT 1	FBP-40-1	7MHz – 7.45MHz
5	ANT 1	FBP-13/21	13.6MHz – 21.5MHz
6	ANT 1	FBP2135	21.5MHz – 35.0MHz
7	ANT 1	FHP1M7-1	1.7MHz – 54MHz
8	ANT 1	FBPY	0Hz – 1.7MHz
9	ANT 1	-	-
10	ANT 1	-	-

4 LCD Display



1. LP: turns on when the low pass filter is active.
ATT: turns on when attenuation is active.
2. METER: displays the signal strength in S-units.
3. Units of measurements of the values displayed. The “S” letter of SWR is also used to indicate that the “QuickStep” function is active.
4. PK: blinks if the ADC of reception is “overloaded”.
5. Secondary indication: displays the signal strength in dBm.
6. Measurement unit for the secondary indication.
7. LOC: turns on when the Main Knob is locked.
REM: turns on when the remote mode is active, turns off when the stand-alone mode is active.
8. CAT: turns on when a CAT command is received.
SERV: turns on when the service mode is enabled.
9. Displays the selected operating mode.
10. Turns on when the external frequency reference is present.
11. E2 selected function :
 - : filter bandwidth setting,
 - PITCH : CW pitch frequency setting,
 - RIT : Receiver Incremental Tuning setting.
12. Alphanumeric characters to displaying messages and numeric values.

13. E1 selected function :
 - VOL: main volume setting,
 - SQL : squelch setting (for FM mode),
 - AGC: automatic gain control settings,
 - NR: noise reduction setting,
 - NB: noise blanker setting,
 - AN : auto notch setting.
14. Displays the selected VFO, A or B.
15. MEM: turns on in memory mode.
 - VFO: turns on in VFO mode.
 - SET: turns on when the setting menu is shown.
 - SET: turns on jointly to MEM when the VFO→MEM menu is active.
16. In memory mode, displays the selected memory index. When in the setting menu, displays the menu number.
17. RX: reception state indication.

5 Quick Start

These instructions are intended only for a quick guide, detailed instructions are given later in this manual.

5.1 First of all

To avoid having a forest of buttons and knobs as front panel, each control has different operating modes.

The buttons can be “short pressed” or “long pressed” to activate different functions. The different functions associated to each pressure are written in different colors just above the corresponding button. Each top white label is associated to the “short pressure” on the button, while the lower blue label is associated to the “long pressure”.

Example

A/B
M

swaps A and B VFOs if “short pressed”, and swaps VFO and Memory mode if “long pressed”.
The A/B label refers to the A/B VFO swap obtained with a “short pressure”.
The M label refers to the VFO/Memory mode swap obtained with a “long pressure”.

Long Pressure

A button is “long pressed” when it is kept pressed for more than 1 sec.
This value can be changed using menu 71 (Hold Time) as explained in section **6.5 - Settings Menu List**.
Valid values can vary from 500 ms to 2500 ms.

The knobs can be pressed as well to control a different parameter.

Example

The E1 knob usually controls the audio volume, but if pressed once it controls the squelch value.

Tuning

The tuning knob can be pressed to change the tuning step or to enter the “Digit by digit tuning mode”.
The tuning knob operations are detailed in section **6.1.1 - Tuning**.

5.2 Reset

When first approaching a largely programmable device like FDM-DUOr it is nearly unavoidable to mess some parameters with useless values. This is not a problem and should not prevent users from trying the different settings, since a “reset” command is available to bring back the device to the factory settings.

Reset

The reset procedure is quite simple:

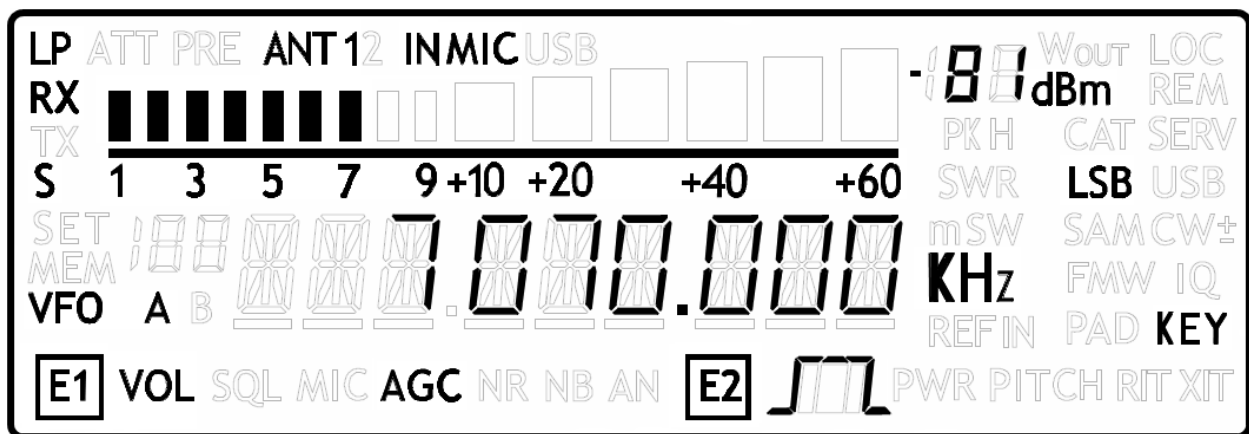
- short press the MENU button
- turn the F2 knob until reading 81 DEFAULT on the display
- short press the E2 knob to show “N” on the right of DEFAULT
- turn the E2 knob to change “N” to “Y”
- short press the E2 knob
- wait for the radio reset and restart

5.3 A first trip

A radio like FDM-DUOr has many possible application scenarios, both used as a stand-alone device, and paired with its mate software.

In this section the simplest and most common uses will be shown, to allow a first familiarization with FDM-DUOr.


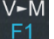
The first use for FDM-DUOr is, clearly, reception. To do that, just connect the device to a 12V power supply (or to a battery) and turn it on by using the back switch.



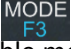
After some seconds the device is in reception mode with VFO A enabled.

The main controls are as follows:

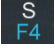
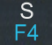
Bands

FDM-DUOr does not have the “band” concept, thus there is no “band switch”. There are, though, some special memories holding the value of the low frequency limit of each band as factory settings. The “Quick Mem” mode can be used to quickly reach the wanted band; it is activated by long pressing the  button. Press and hold the  button until the display shows the wanted band.

Modes

The  button is used to change to mode: at each short press the mode is changed to the next possible mode.

Tuning

The tuning is done using the main tuning knob. It is possible to change the tuning step to an alternate value with a short pressure on the  button. Another short pressure on the  button resets the usual tuning step. It is possible to change the tuning step to various values with a short pressure on the tuning knob. This leads the tuning knob to select different tuning steps. Once the desired step has been selected, another short pressure on the tuning knob will bring it back to control the tuning, using the new selected step.

Volume and bandwidth

The volume is set by the E1 knob.
The E2 knob controls the bandwidth.

Enhancing Reception

By clicking on the E1 knob, it is possible to activate some useful options:

1. Audio Volume: this, as seen previously, is the default behavior;
2. Squelch Value: if activated, the related icon on the display blinks;
3. Automatic Gain Control On/Off: if activated, the AGC icon on the display blinks;
4. Automatic Gain Control Speed: it is possible to select Slow, Medium, or Fast;
5. Noise Reduction: it is possible to activate and set the level, if activated the NR icon on the display blinks;
6. Noise Blanker: it is possible to activate and set the level, if activated the NB icon on the display blinks;
7. Auto Notch: it is possible to activate and select two different levels of intervention; when activated, Auto Notch detects and kills an audio persistent tone.

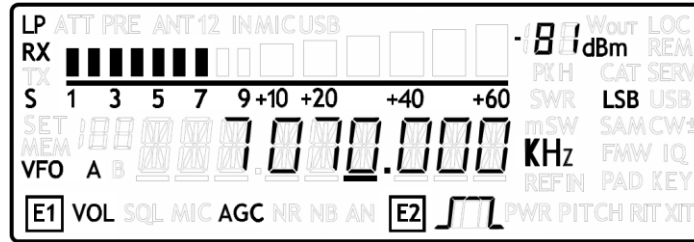
By clicking on the E2 knob, it is possible to activate some useful options:

1. Filter Bandwidth: this, as seen previously, is the default behavior;
2. CW Pitch: this allows to choose the preferred CW reception tone;
3. Receive Incremental Tuning On/Off;
4. Receive Incremental Tuning Value: this allows to move the reception frequency away from the transmission frequency; this function appears only if the previous Receive Incremental Tuning is set to On.

6 User Interface

6.1 VFO Mode

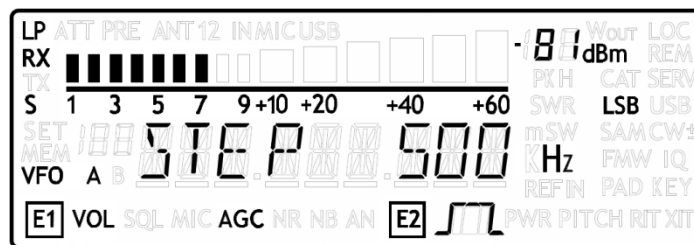
The VFO mode is the default mode of FDM-DUOr. Each VFO memorize the tuning frequency, mode and tuning step



6.1.1 Tuning

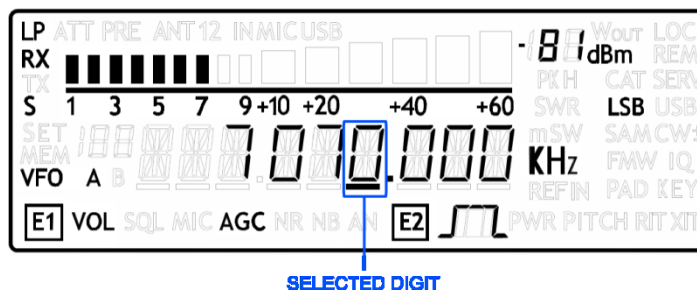
In this mode, use the Main Knob to tune a frequency.

A short pressure on the main knob enter the frequency step menu



Use the main knob to modify the tuning step, then with a short pressure return in the VFO menu.

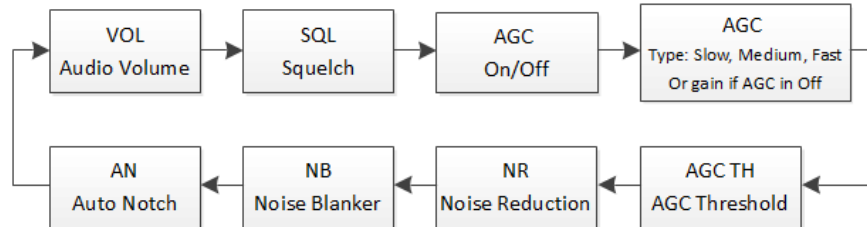
With a long pressure over the main knob, the Digit by Digit Frequency tuning mode is activated



In this mode use the main knob to modify the selected digit and E1 or E2 to change witch digit you want to modify. Apply a short pressure on main knob to return in the standard tuning mode.

6.1.2 E1 Receiver Settings

Apply a short pressure on the E1 knob to change the E1 selected parameter, the selected parameter icon is turned on in the LCD. Turn until one click the E1 knob to display the parameter value, then turn again E1 to modify the parameter value.



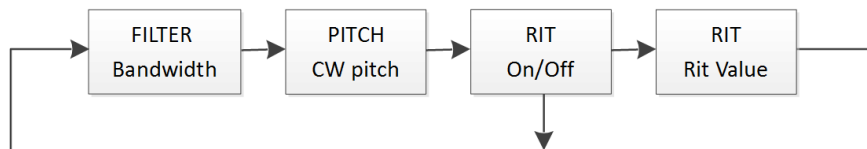
SQL: if the Squelch is turned on the relative SQL icon blinks.

AGC: if the AGC is turned OFF (manual gain mode), the AGC icon blinks.

NR and NB: if the Noise Reducer or the Noise Blanker is turned on the relative NR or NB icon blinks.

6.1.3 E2 Receiver Settings

Apply a short pressure on the E2 knob to change the E2 selected parameter, turn until one click the E1 knob to display the parameter value, then turn again E1 to modify the parameter value.



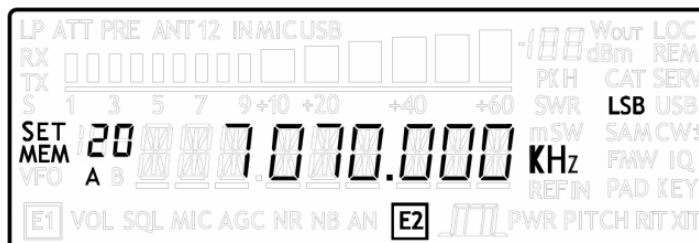
RIT: if the RIT is turned on the relative RIT icon blinks, note that if the RIT is turned off the “Rit Value” menu is not displayed. To modify the RIT value you have to use the E2 knob to change the selected digit and press the **S**/**F4** key to change the digit selection. Keep press the **S**/**F4** key to reset the RIT value.

6.1.4 Switch VFO

Use the **A/B**/**M** button to switch VFO-A/B.

6.1.5 Store VFO to memory

Use the **V-M**/**F1** key to store the current VFO settings into a memory



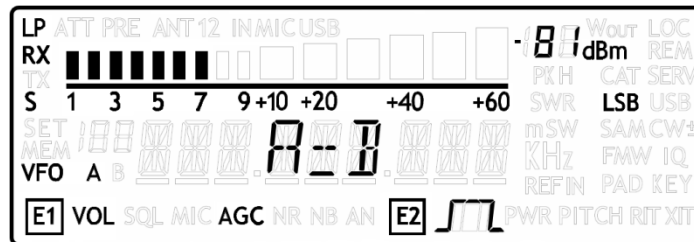
Use E2 knob or main knob to select the destination memory and confirm with a short pressure on E2.

6.1.6 “QuickMem” Mode

Keep pressed the **V-M** **F1** key to enter the “QuickMem” mode. The memory channels 180 to 199 are reserved for the “QuickMem” selection. Keep pressed the **V-M** **F1** key until the desired frequency appears on the LCD display, then release the key and the current VFO is set to the frequency and mode saved in the memory channel. You can use the “FDM-DUOr Manager” feature in the ELAD FDM-SW2 software to customize the memory channels.

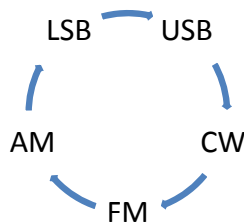
6.1.7 VFO-A = VFO-B

With long pressure on **M-V** **F2** key you get VFO-A = VFO-B



6.1.8 Change Operating Mode

With a short pressure on the **MODE** **F3** button, you can change the receiver mode between the available modes:



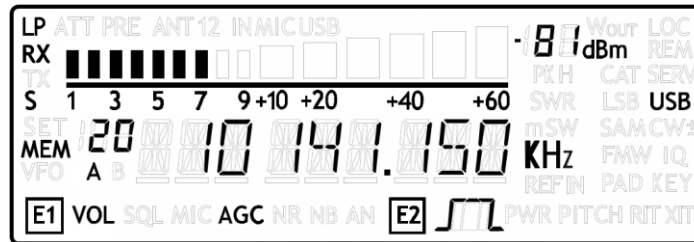
When you do not use the FM mode, you can disable it with the setting menu 14 “FM MODE”. The main purpose of this functionality is to not hear the FM exasperating noise when changing between modes and you are not using the FM mode.

6.1.9 “QuickStep”

With a short pressure on the **S** **F4** key, the “QuickStep” function is activated. This function quickly sets the frequency step preset selected in the “QuickStep” setting menu, press again the **S** **F4** key to set the previous frequency step.

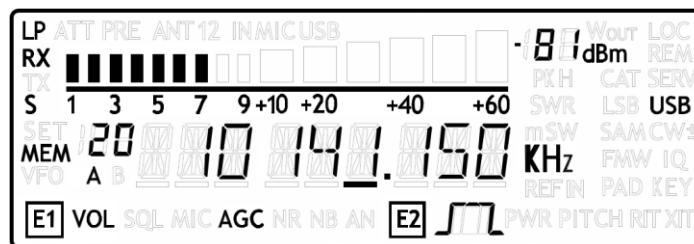
6.2 MEM Mode

To activate the memory mode, apply a long pressure on **A/B M**. In MEM mode it is possible to receive, transmit and change the E1/E2 settings in the same way of the VFO mode.



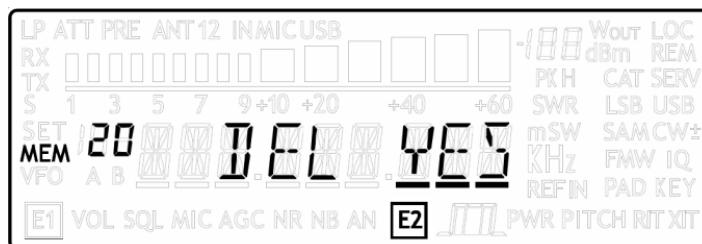
6.2.1 Select and edit a memory

Use the main knob to select a memory. Apply a long pressure on the main encoder to enter the edit memory menu. In this menu it is possible to modify the selected memory frequency in digit by digit mode.



6.2.2 Delete a memory

Apply a long pressure to the **V-M F1** key to enter the delete menu



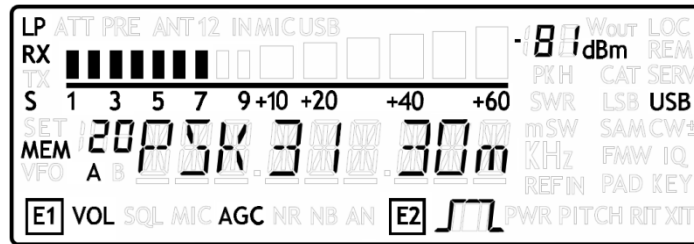
Use the E2 knob to set yes or no and make a short pressure on E2 to confirm.

6.2.3 Set memory to VFO

Use the **A/B M** button to select the VFO-A/B. Use the **M-V F2** key to set in the selected VFO the selected memory frequency and mode. When this function is used, the FDM-DUOr automatically switches to the VFO mode.

6.2.4 Change the memory display mode

Apply a short pressure on the **S F4** key to show the memory label in the LCD main display. Press shortly again **S F4** to return to display the memory frequency.



You can use the “FDM-DUOr Manager” feature in the ELAD FDM-SW2 software to customize the memory channels.

6.3 Knobs Functions

The following table describes the knob functions for some user interface menu :

Menu	Action	Main Knob	E1 Knob	E2 Knob
VFO	Value modified	Change selected VFO frequency	Enter E1 selection parameter	Enter E2 selection parameter
	Short Pressure	Enter STEP menu	Change E1 selected parameter	Change E2 selected parameter
	Long Pressure	Switch to DIGIT by DIGIT tuning mode	(2)	(2)
STEP	Value modified	Change tuning step value		
	Short Pressure	Exit from STEP Menu		
	Long Pressure	Switch to DIGIT by DIGIT tuning mode	(2)	(2)
MEM	Value modified	Select next/previous memory	Enter E1 selection parameter	Enter E2 selection parameter
	Short Pressure		Change E1 selected parameter	Change E2 selected parameter
	Long Pressure	Switch to DIGIT by DIGIT tuning mode	(2)	(2)
E1 Selection: VOL - SQL - AGC - NR - NB	Value modified	Back to VFO or MEM menu	Modify E1 selected parameter value	Modify E2 selected parameter value
	Short Pressure	Back to VFO or MEM menu	Change E1 selected parameter	Change E2 selected parameter
	Long Press	Switch to DIGIT by DIGIT tuning mode	(2)	(2)
E2 Selection: FILTER - PITCH - RIT	Value modified	Back to VFO or MEM menu	Modify E1 selected parameter value	Modify E2 selected parameter value
	Short Pressure	Back to VFO or MEM menu	Change E1 selected parameter	Change E2 selected parameter
	Long Pressure	Switch to DIGIT by DIGIT tuning mode	(2)	(2)
VFO > MEM	Value modified	Change the destination memory		Change the destination memory
	Short Press			Save VFO in the selected memory
	Long Pressure		(2)	(2)
Delete MEM	Value modified			Change Yes/No
	Short Pressure			Confirm Yes/No
	Long Pressure			
SETUP - PARAMETER CHOICE (MENU button)	Value modified			Change parameter selection
	Short Press			Enter parameter setup menu
	Long Pressure			

Menu	Action	Main Knob	E1 Knob	E2 Knob
SETUP - PARAMETER MODIFICATION	Value modified	Parameter coarse variation (1)	Parameter coarse variation (1)	Parameter fine variation
	Short Press			Save and exit
	Long Pressure			
DIGIT by DIGIT Tuning	Value modified	Modify the current digit value	Change digit selection	Change digit selection
	Short Pressure	Switch to standard tuning mode	Switch to standard tuning mode	Switch to standard tuning mode
	Long Pressure		(2)	(2)

(1) Available only for certain menu.

(2) Press simultaneously E1 and E2 to lock/unlock all the keys and knobs. When the keys/knobs lock function is activated the E1/E2 icons blink.

6.4 Keys Functions

The following table describes the keys functions :

Mode	Pressure	A/B M	V>M F1	M>V F2	MODE F3	S F4	MENU F5
VFO	Short	Switch VFO	Enter VFO to MEM menu	-	Change selected VFO operating mode	Enable/disable Quickstep function	Enter settings menu
	Long	Switch to MEM mode	Enter "QuickMem" menu	VFO A = B	-	-	Lock/Unlock Main Knob
MEM	Short	Switch VFO	-	Selected memory to VFO	Change selected memory operating mode	Change memory display frequency/label	Enter settings menu
	Long	Switch to VFO mode	Enter delete memory menu	-	-	-	Lock/Unlock Main Knob

6.5 Settings Menus List

The following table describes the FDM-DUOr settings menus list. To enter the settings menus mode, press the **MENU F5** key. Use E2 to select the menu, then apply a short pressure on E2 to display the current menu setting, if you want to change the setting use the E2 knob and confirm the setting with a short pressure on E2. In some menu you can also use the main knob to change the setting more quickly. To turn back or exit the menu just press **MENU F5**.

Menu	Title	Description	Available Settings	Default	Main Knob Use	Relative CAT Command
RECEPTION MENUS						
1	RX ATT	Receiver input attenuation.	0dB, 10dB, 20dB and 30dB	0dB	-	AT
3	SNAP	Round to step.	OFF or ON	ON	-	SA
4	AGC TH	AGC Threshold.	From 0 to 10	4	-	TH
6	AUX VOL	Auxiliary output volume.	From 0 to 100	50	-	VA
7	QUICKSTEP	Step selected for the "QuickStep" mode.	1Hz, 5Hz, 10Hz, 25Hz, 50Hz, 100Hz, 250Hz, 500Hz, 1kHz, 2kHz, 3kHz, 4.5kHz, 5kHz, 7.5kHz, 9kHz, 10kHz, 12.5kHz, 25kHz, 50kHz, 100kHz, 125kHz, 250kHz, 500kHz, 1MHz	1kHz	-	QS
12	SET CW MODE	Enable / disable CW reverse mode.	YES or NO	NO	-	MD
14	FM MODE	Enable / disable FM mode.	OFF or ON	ON	-	FM
15	RIT STEP	Step value for managing the RIT. If the value set is "none" the old operation mode is used (without step but digit by digit), if the value set is in Hz, the new operation mode is used (with step).	None, 1Hz, 5Hz, 10Hz, 25Hz, 50Hz, 100Hz, 250Hz, 500Hz, 1kHz	10Hz	-	RN
GENERAL SETTINGS MENUS						
60	FR OFFSET	Enable / Disable the frequency offset for the visualization.	OFF or ON	OFF	-	OS

Menu	Title	Description	Available Settings	Default	Main Knob Use	Relative CAT Command
61	OFS VALUE	Frequency offset value for the visualization.	+/- 99.999999999 GHz. See Frequency visualization offset menu	0Hz	Yes	OV/OW
70	CAT BAUD	CAT serial port baud rate.	9600, 38400, 57600, 115200	38400	-	BR
71	HOLD TIME	Hold time to detect a long pressure.	From 500 to 2500ms	1000ms	-	HT
72	REPT TIME	Repetition time when a key is pressed.	From 100 to 1500ms	600ms	-	ET
73	BACKLIGHT	Enables the backlight to change when the DUO changes modality between Stand-Alone and Remote.	YES or NO	YES	-	BH
SERVICE MENUS						
80	SERVICE	Enable Service mode.	ON or OFF	OFF	-	SE
81	DEFAULT	Restore default parameters.	YES or NO	NO	-	DF
82	UI UPDATE	If Service mode is active, enable the firmware update mode.	YES or NO	NO	-	UU
83	VIEW SN	Display the FDM-DUOr serial number			-	SN
84	VIEW FW	Display the FDM-DUOr firmware versions	Firmware	UI	-	VS
85	CLK ADJ	Sets the internal clock correction value. It is used to have a fine frequency setting. In case of "Ref In" utilization, this parameter is not relevant.	±50000 dots (not Hz)	-	Yes	CJ

6.5.1 Frequency visualization offset menu

The frequency visualization offset is helpful when using a transverter. The Frequency offset set in digit by digit mode with some improvements to set a signed 10 digit offset in a 9 digit display.

- E2: Select the digit to modify
- Main encoder: modify the selected digit value
- E1: change the visualization
 - kHz: the 8 most significant digit of the frequency offset are displayed
 - Hz: the 9 least significant digit of the frequency offset are displayed
- E1 or Main encoder short pressure: change the sign of the offset (+/-)
- E2 short pressure: save the setting

EXAMPLES:

Frequency offset value: +10,000,034,120 Hz

- kHz Display mode



- Hz Display mode



7 CAT Remote Control

7.1 General Specifications

The FDM-DUOr receiver uses a full-duplex, asynchronous, USB serial interface for communicating through the USB CAT port. Each data is constructed with 1 start bit, 8 data bits, 1 stop bit, no parity is used (8N1). The baud rate is selectable in the [70] CAT BAUD menu. Available values are 9600, 38400, 57600, 115200 bps.

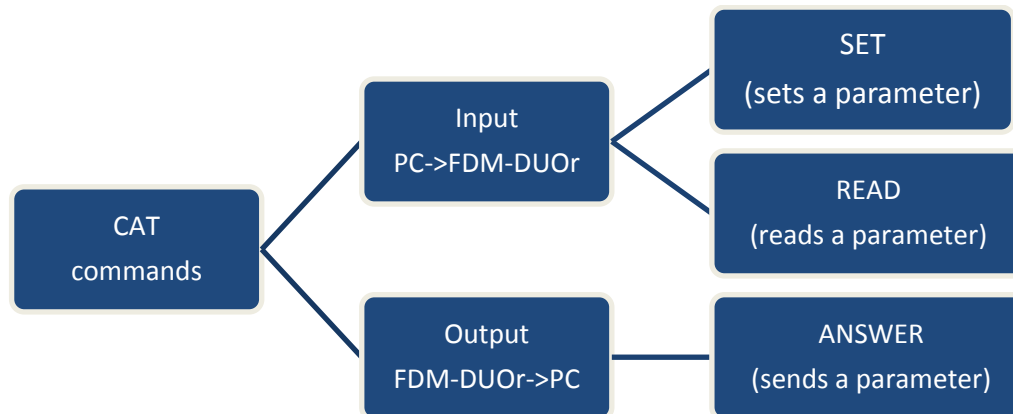
The FDM-DUOr implements proprietary commands and also a subset of the Kenwood TS-480 command set. Some of those TS-480 commands have no effect on the receiver, they only ensure the compatibility of the FDM-DUOr with Ham Radio Deluxe.

7.2 Commands Types

A CAT command is composed of an alphabetical part, various parameters and a terminator that signals the end of the command. For example to set the VFO-A to 14MHz the command is: "FA00014000000;" with :

- "FA": alphabetical command,
- "00014000000": parameter,
- ";": terminator.

CAT commands can be classified as shown below:



EXAMPLE

- To set the VFO-A to 14MHz the PC sends the **SET command type** "FA00014000000;"
- To read the VFO-A frequency the PC sends the **READ command type** "FA;", the **ANSWER response type** is returned to the PC: "FA00014000000;"

NOTE

Some particular rules about the CAT commands on the FDM-DUOr :

- not all the commands have the three types of command/response (**SET**, **READ** and **ANSWER**),
- normally, send the **SET command type** will not cause the FDM-DUOr to send the **ANSWER response type** but if a command does not have a **READ command type** and has the **SET and ANSWER type**, then send the **SET command** will cause the FDM-DUOr to send the **ANSWER response type**.

7.3 Cat Commands

7.3.1 Active commands list

COMMAND	FUNCTION	SET	READ	ANS.
AT/RA	RF ATTENUATOR	YES	YES	YES
BH	BACKLIGHT CHANGE	YES	YES	YES
BR	BAUD RATE	YES	YES	YES
DF	DEFAULT	YES	-	YES
DT	DUO TYPE	-	YES	YES
ET	REPEAT TIME	YES	YES	YES
FA	VFO-A FREQUENCY	YES	YES	YES
FB	VFO-B FREQUENCY	YES	YES	YES
FI	INTERNAL FILTER MODULES	YES	YES	YES
FM	FM MODE ACTIVATION	YES	YES	YES
FR/FT	VFO/MEM MODE	YES	YES	YES
GC	GAIN CONTROL	YES	YES	YES
GI	GENERAL INFORMATION	-	YES	YES
GS	GAIN SETTINGS	YES	YES	YES
HT	HOLD TIME	YES	YES	YES
IF	INFORMATION	-	YES	YES
LB	LCD BACKLIGHT	YES	YES	YES
LP	LOW PASS	YES	YES	YES
MA	VFO-A MODE	-	YES	YES
MB	VFO-B MODE	-	YES	YES
MC	MEMORY CHANNEL	YES	YES	YES
MD	MODE	YES	YES	YES
MR	MEMORY READ	-	YES	YES
MU	MUTE RX	YES	YES	YES
MW	MEMORY WRITE	YES	-	-
NB	NOISE BLANKER STATUS	-	YES	YES
NC	NOISE REDUCTION	YES	YES	YES
NK	NOISE BLANKER	YES	YES	YES
NO	AUTO NOTCH	YES	YES	YES
NR	NOISE REDUCTION STATUS	-	YES	YES
OS	FVO STATE	YES	YES	YES
OV	FVO VALUE	YES	YES	YES
OW	FVO VALUE	YES	YES	YES
PI	PITCH	YES	YES	YES
QS	QUICK STEP	YES	YES	YES
RC	RIT CLEAR	YES	-	-
RD	RIT DOWN	YES	YES	YES
RF	RECEPTION FILTERS	YES	YES	YES
RI	READS RSSI	-	YES	YES
RN	RIT STEP	YES	YES	YES
RT	RIT STATUS	YES	YES	YES
RU	RIT UP	YES	YES	YES
RV	RIT VALUE	YES	YES	YES
SA	TUNE SNAP	YES	YES	YES
SE	SERVICE	YES	YES	YES
SI	STEP INDEX	YES	YES	YES
SM	S METER	-	YES	YES
SN	SERIAL NUMBER	-	YES	YES
SQ	SQUELCH	YES	YES	YES
TH	AGC THRESHOLD	YES	YES	YES
UU	UI UPDATE	YES	-	YES

COMMAND	FUNCTION	SET	READ	ANS.
VA	AUX VOLUME	YES	YES	YES
VE	VFOs EQUAL	YES	-	YES
VM	MAIN VOLUME	YES	YES	YES
VS	FIRMWARE VERSION	-	YES	YES

FVO : Frequency Visualization Offset (for transverter use)

RIT : Receiver Incremental Tuning

RSSI : Received Signal Strength Indicator

7.3.2 Active commands tables

AT	Reads or sets the input attenuator status										Parameters: P1: '0': 0dB '1': 10dB '2': 20dB '3': 30dB
Set	1	2	3	4	5	6	7	8	9	10	
	A	T	P1	;							
Read	1	2	3	4	5	6	7	8	9	10	
	A	T	;								
Answer	1	2	3	4	5	6	7	8	9	10	
	A	T	P1	;							

BH	Enables or disables the backlight change when moving between modes (stand-alone mode and remote mode)										Parameters: P1: '0': off '1': on
Set	1	2	3	4	5	6	7	8	9	10	
	B	H	P1	;							
Read	1	2	3	4	5	6	7	8	9	10	
	B	H	;								
Answer	1	2	3	4	5	6	7	8	9	10	
	B	H	P1	;							

BR	Reads or sets the baud rate value										Parameters: P1: '0': 9600 '1': 38400 '2': 57600 '3': 115200
Set	1	2	3	4	5	6	7	8	9	10	
	B	R	P1	;							
Read	1	2	3	4	5	6	7	8	9	10	
	B	R	;								
Answer	1	2	3	4	5	6	7	8	9	10	
	B	R	P1	;							

DF	Sets the settings default values										Parameters: P1 : always '1' P2 : "5214" P3: result: '0' error '1' ok
Set	1	2	3	4	5	6	7	8	9	10	
	D	F	P1	P2	P2	P2	P2	;			
Read											
Answer	1	2	3	4	5	6	7	8	9	10	
	D	F	P3	;							

DT	Reads the FDM-DUO type										Parameters: P1 : always "002"
Set											
Read	1	2	3	4	5	6	7	8	9	10	
	D	T	;								
Answer	1	2	3	4	5	6	7	8	9	10	
	D	T	P1	P1	P1	;					

ET	Reads or sets the repeat time setting										Parameters: P1: repeat time, from 100ms to 1500ms in 100ms steps.
Set	1	2	3	4	5	6	7	8	9	10	
	E	T	P1	P1	P1	P1	;				
Read	1	2	3	4	5	6	7	8	9	10	
	E	T	;								
Answer	1	2	3	4	5	6	7	8	9	10	
	E	T	P1	P1	P1	P1	;				

FA	Reads or sets the VFO A frequency										Parameters: P1: frequency in Hz (11 digit)
Set	1	2	3	4	5	6	7	8	9	10	
	F	A	P1	P1	P1	P1	P1	P1	P1	P1	
	11	12	13	14	15	16	17	18	19	20	
Read	1	2	3	4	5	6	7	8	9	10	
	F	A	;								
Answer	1	2	3	4	5	6	7	8	9	10	
	F	A	P1	P1	P1	P1	P1	P1	P1	P1	
	11	12	13	14	15	16	17	18	19	20	
	P1	P1	P1	;							

FB	Reads or sets the VFO B frequency										Parameters: P1: frequency in Hz (11 digit)
Set	1	2	3	4	5	6	7	8	9	10	
	F	B	P1	P1	P1	P1	P1	P1	P1	P1	
	11	12	13	14	15	16	17	18	19	20	
Read	1	2	3	4	5	6	7	8	9	10	
	F	B	;								
Answer	1	2	3	4	5	6	7	8	9	10	
	F	B	P1	P1	P1	P1	P1	P1	P1	P1	
	11	12	13	14	15	16	17	18	19	20	
	P1	P1	P1	;							

FI	Reads or sets the internal filter modules settings										Parameters: P1: module index, from "00" to "09" P2: module state; '0': not used '1': used P3: module low frequency P4: module high frequency
Set	1	2	3	4	5	6	7	8	9	10	
	F	I	P1	P1	P2	P3	P3	P3	P3	P3	
	11	12	13	14	15	16	17	18	19	20	
	P3	P3	P3	P3	P3	P3	P4	P4	P4	P4	
Read	21	22	23	24	25	26	27	28			
	P4	P4	P4	P4	P4	P4	P4	;			
Answer	1	2	3	4	5	6	7	8	9	10	
	F	I	P1	P1	;						
	11	12	13	14	15	16	17	18	19	20	
	P3	P3	P3	P3	P3	P3	P4	P4	P4	P4	
Read	21	22	23	24	25	26	27	28			
	P4	P4	P4	P4	P4	P4	P4	;			

FM	Reads or sets the FM mode activation status										Parameters: P1: '0': FM mode not available '1': FM mode available
Set	1	2	3	4	5	6	7	8	9	10	
	F	M	P1	;							
Read	1	2	3	4	5	6	7	8	9	10	
	F	M	;								
Answer	1	2	3	4	5	6	7	8	9	10	
	F	M	P1	;							

FR	Reads or sets the VFO or M.CH mode										Parameters: P1: '0': VFO-A '1': VFO-B '2': M.CH
Set	1	2	3	4	5	6	7	8	9	10	
	F	R	P1	;							
Read	1	2	3	4	5	6	7	8	9	10	
	F	R	;								
Answer	1	2	3	4	5	6	7	8	9	10	
	F	R	P1	;							

FT	Reads or sets the VFO or M.CH mode										Parameters: P1: '0': VFO-A '1': VFO-B '2': M.CH
Set	1	2	3	4	5	6	7	8	9	10	
	F	T	P1	;							
Read	1	2	3	4	5	6	7	8	9	10	
	F	T	;								
Answer	1	2	3	4	5	6	7	8	9	10	
	F	T	P1	;							

GC	Reads or sets the active gain control										Parameters: P1: '0': auto (AGC) '1': manual
See also GS and TH commands											
Set	1	2	3	4	5	6	7	8	9	10	
	G	C	P1	;							
Read	1	2	3	4	5	6	7	8	9	10	
	G	C	;								
Answer	1	2	3	4	5	6	7	8	9	10	
	G	C	P1	;							

GI	Reads the receiver state										Parameters: P1 : RIT state 0 : off 1 : on P2 : always 0 P3 : selected memory index (0-199) P4 : always 0 P5 : operating mode (see MD) P6 : receiver mode (see FR/FT) P7 : always 0 P8 : always 0
Set											
Read	1	2	3	4	5	6	7	8	9	10	
	G	I	;								
Answer	1	2	3	4	5	6	7	8	9	10	
	G	I	P1	P2	P3	P3	P3	P4	P5	P6	
	11	12	13	14	15	16	17	18	19	20	
	P7	P8	P8	P8	P8	;					

GS	Reads or sets the control gain settings										Parameters: P1: 0: auto (AGC) 1: manual P2 for P1=0: 0 : slow 1 : medium 2 : fast P2 for P1=1: 0 : OFF 1 a 10 : active
	See also GC and TH commands										
Set	1	2	3	4	5	6	7	8	9	10	
	G	S	P1	P2	P2	P2	;				
Read	1	2	3	4	5	6	7	8	9	10	
	G	S	P1	;							
Answer	1	2	3	4	5	6	7	8	9	10	
	G	S	P1	P2	P2	P2	;				

HT	Reads or sets the hold time setting										Parameters: P1: hold time, from 200ms to 2500ms in 100ms steps.
Set	1	2	3	4	5	6	7	8	9	10	
	H	T	P1	P1	P1	P1	;				
Read	1	2	3	4	5	6	7	8	9	10	
	H	T	;								
Answer	1	2	3	4	5	6	7	8	9	10	
	H	T	P1	P1	P1	P1	;				

IF	Retrieves the receiver status										Parameters: P1: Frequency 11 digit P2: 5 spaces P3: RIT value in tens of hertz P4: RIT state 0: OFF 1: ON P5: Always 0 P6/P7: Memory ch. Number 0-199 P8: Always 0 P9: Operating Mode (See MD) P10: See FR/FT P11: Always 0 P12: Always 0 P13: Always 0 P14: Always 0 P15: Space
Set											
Read	1	2	3	4	5	6	7	8	9	10	
	I	F	;								
Answer	1	2	3	4	5	6	7	8	9	10	
	I	F	P1	P1	P1	P1	P1	P1	P1	P1	
	11	12	13	14	15	16	17	18	19	20	
	P1	P1	P1	P2	P2	P2	P2	P2	P3	P3	
	21	22	23	24	25	26	27	28	29	30	
	P3	P3	P3	P4	P5	P6	P7	P7	P8	P9	
	31	32	33	34	35	36	37	38	39	40	
	P10	P11	P12	P13	P14	P14	P15	;			

LB	Sets/Reads the LCD backlight parameters										Parameters: P1 mode 0 : temporary set 1 : Rx Stand Alone 2 : Rx Remote (PC Controlled) P2 mode selection 1 : Rx Stand Alone 2 : Rx Remote (PC Controlled) P3 : RED component (0 to 100) P4 : GREEN component (0 to 100) P5 : BLUE component (0 to 100)
Set	1	2	3	4	5	6	7	8	9	10	
	L	B	P1	P3	P3	P3	P4	P4	P4	P5	
	11	12	13	14	15	16	17	18	19	20	
Read	1	2	3	4	5	6	7	8	9	10	
	L	B	P2	;							
	1	2	3	4	5	6	7	8	9	10	
Answer	1	2	3	4	5	6	7	8	9	10	
	L	B	P2	P3	P3	P3	P4	P4	P4	P5	
	11	12	13	14	15	16	17	18	19	20	
	P5	P5	;								

LP	Reads the Low-Pass Filter Status										Parameters: P1 '0': not active '1': active
Read	1	2	3	4	5	6	7	8	9	10	
	L	P	;								
Answer	1	2	3	4	5	6	7	8	9	10	
	L	P	P1	;							

MA	Reads the VFO A operating mode										Parameters: P1: '1': LSB '2': USB '3': CW '4': FM '5': AM '7': CWR
Set											
Read	1	2	3	4	5	6	7	8	9	10	
	M	A	;								
Answer	1	2	3	4	5	6	7	8	9	10	
	M	A	P1	;							

MB	Reads the VFO B operating mode										Parameters: P1: '1': LSB '2': USB '3': CW '4': FM '5': AM '7': CWR
Set											
Read	1	2	3	4	5	6	7	8	9	10	
	M	B	;								
Answer	1	2	3	4	5	6	7	8	9	10	
	M	B	P1	;							

MC	Recalls or reads the memory channel										Parameters: P1: '0' or '1' P2: "00" to "99"
Set	1	2	3	4	5	6	7	8	9	10	
	M	C	P1	P2	P2	;					
Read	1	2	3	4	5	6	7	8	9	10	
	M	C	;								
Answer	1	2	3	4	5	6	7	8	9	10	
	M	C	P1	P2	P2	;					

MD	Recalls or reads the operating mode										Parameters: P1: '1': LSB '2': USB '3': CW '4': FM '5': AM '7': CWR
Set	1	2	3	4	5	6	7	8	9	10	
	M	D	P1	;							
Read	1	2	3	4	5	6	7	8	9	10	
	M	D	;								
Answer	1	2	3	4	5	6	7	8	9	10	
	M	D	P1	;							

MR	Reads the Memory channel data										Parameters: P1: 0 P2/3: 0 to 199 Memory No. P4: Frequency (11 digit) P5: Mode (see MD command) P6: Always 0 P7: Always 0 P8: Always 0 P9: Always 0 P10 to P13: Memory label, last 14 chars P14: 0 P15: Memory status B: used F: free P16: Memory label, first 8 chars
Set											
Read	1	2	3	4	5	6	7	8	9	10	
	M	R	P1	P2	P3	P3					
Answer	1	2	3	4	5	6	7	8	9	10	
	M	R	P1	P2	P3	P3	P4	P4	P4	P4	
	11	12	13	14	15	16	17	18	19	20	
	P4	P4	P4	P4	P4	P4	P4	P5	P6	P7	
	21	22	23	24	25	26	27	28	29	30	
	P8	P8	P9	P9	P10	P10	P10	P11	P12	P13	
	31	32	33	34	35	36	37	38	39	40	
	P13	P13	P13	P13	P13	P13	P13	P13	P14	P14	
41	42	43	44	45	46	47	48	49	50		
P15	P16	P16	P16	P16	P16	P16	P16	P16	;		

MU	Sets or reads the mute function status										Parameters: P1: "000" : OFF "001" : ON P2: "000" : OFF "001" : ON (turned on from cat) "002" : ON (turned on from jack)
Set	1	2	3	4	5	6	7	8	9	10	
	M	U	P1	P1	P1	;					
Read	1	2	3	4	5	6	7	8	9	10	
	M	U	;								
Answer	1	2	3	4	5	6	7	8	9	10	
	M	U	P2	P2	P2	;					

MW	Store the data to the Memory channel										Parameters: P1: 0 P2/3: 0 to 199 Memory No. P4: Frequency (11 digit) P5: Mode (see MD command) P6: Always 0 P7: Always 0 P8: Always 0 P9: Always 0 P10 to P13: Memory label, last 14 chars P14: 0 P15: Memory status B: used F: free P16: Memory label, first 8 chars
Set	1	2	3	4	5	6	7	8	9	10	
	M	W	P1	P2	P3	P3	P4	P4	P4	P4	
	11	12	13	14	15	16	17	18	19	20	
	P4	P4	P4	P4	P4	P4	P4	P5	P6	P7	
	21	22	23	24	25	26	27	28	29	30	
	P8	P8	P9	P9	P10	P10	P10	P11	P12	P13	
	31	32	33	34	35	36	37	38	39	40	
	P13	P13	P13	P13	P13	P13	P13	P13	P14	P14	
41	42	43	44	45	46	47	48	49	50		
P15	P16	P16	P16	P16	P16	P16	P16	P16	;		
Read											
Answer											

NB	Reads the noise blanker function status										Parameters: P1: '0' : Noise Blanker OFF '1' : Noise Blanker ON
Set											
Read	1	2	3	4	5	6	7	8	9	10	
	N	B	;								
Answer	1	2	3	4	5	6	7	8	9	10	
	N	B	P1	;							

NC	Reads or sets the noise reduction value										Parameters: P1: always '0' P2: noise reduction value: 0 : OFF 1 ~ 10 : active
Set	1	2	3	4	5	6	7	8	9	10	
	N	C	P1	P2	P2	P2	;				
Read	1	2	3	4	5	6	7	8	9	10	
	N	C	P1	;							
Answer	1	2	3	4	5	6	7	8	9	10	
	N	C	P1	P2	P2	P2	;				

NK	Reads or sets the noise blanker value										Parameters: P1: always '0' P2: noise blanker value: 0 : OFF 1 ~ 10 : active
Set	1	2	3	4	5	6	7	8	9	10	
	N	K	P1	P2	P2	P2	;				
Read	1	2	3	4	5	6	7	8	9	10	
	N	K	P1	;							
Answer	1	2	3	4	5	6	7	8	9	10	
	N	K	P1	P2	P2	P2	;				

NO	Reads or sets the auto notch value										Parameters: P1 always 0 P2 auto notch value 0: OFF 01 ~ 02 (active)
Set	1	2	3	4	5	6	7	8	9	10	
	N	O	P1	P2	P2	P2	;				
Read	1	2	3	4	5	6	7	8	9	10	
	N	O	P1	;							
Answer	1	2	3	4	5	6	7	8	9	10	
	N	O	P1	P2	P2	P2	;				

NR	Reads the noise reduction function status										Parameters: P1: '0': Noise Reduction OFF '1': Noise Reduction ON
Set											
Read	1	2	3	4	5	6	7	8	9	10	
	N	R	;								
Answer	1	2	3	4	5	6	7	8	9	10	
	N	R	P1	;							

OS	Sets/Reads the Frequency view offset status										Parameters: P1: '0': not active '1': active
	See also OV and OW commands										
Set	1	2	3	4	5	6	7	8	9	10	
	O	S	P1	;							
Read	1	2	3	4	5	6	7	8	9	10	
	O	S	;								
Answer	1	2	3	4	5	6	7	8	9	10	
	O	S	P1	;							

OV	Sets/Reads the Frequency view offset value										Parameters: P1: always '0'
	See also OS and OW commands										
Set	1	2	3	4	5	6	7	8	9	10	P2: offset sign '+' / '-' P3: absolute value in Hz
	O	V	P1	P2	P3	P3	P3	P3	P3	P3	
	11	12	13	14	15	16	17	18	19	20	
Read	P3	P3	P3	P3	P3	P3	P3	P3	P3	;	
	1	2	3	4	5	6	7	8	9	10	
Answer	O	V	P1	;							
	1	2	3	4	5	6	7	8	9	10	
	O	V	P1	P2	P3	P3	P3	P3	P3	P3	
	11	12	13	14	15	16	17	18	19	20	
	P3	P3	P3	P3	P3	P3	P3	P3	P3	;	

OW	Sets/Reads the Frequency view offset value										Parameters: P1: offset sign '+' / '-'
	See also OS and OV commands										
Set	1	2	3	4	5	6	7	8	9	10	P2: absolute value in Hz
	O	W	P1	P2	P2	P2	P2	P2	P2	P2	
	11	12	13	14	15	16	17	18	19	20	
Read	P2	P2	P2	P2	P2	;					
	1	2	3	4	5	6	7	8	9	10	
Answer	O	W	;								
	1	2	3	4	5	6	7	8	9	10	
	O	W	P1	P2	P2	P2	P2	P2	P2	P2	
	11	12	13	14	15	16	17	18	19	20	
	P2	P2	P2	P2	P2	;					

PI	Reads or sets the pitch value										Parameters: P1: pitch value in Hz: "0000" ~ "1000" in 10Hz step
Set	1	2	3	4	5	6	7	8	9	10	
	P	I	P1	P1	P1	P1	;				
Read	1	2	3	4	5	6	7	8	9	10	
	P	I	;								
Answer	1	2	3	4	5	6	7	8	9	10	
	P	I	P1	P1	P1	P1	;				

QS	Sets or reads the quick step index										Parameters: P1: quickstep index	
Set	1	2	3	4	5	6	7	8	9	10	Steps list (in Hz): 1, 5, 10, 25, 50, 100, 250, 500, 1000, 2000, 3000, 4500, 5000, 7500, 9000, 10k, 12.5k, 25k, 50k, 100k, 125k, 250k, 500k, 1M.	
	Q	S	P1	P1	;							
Read	1	2	3	4	5	6	7	8	9	10		
	Q	S	;									
Answer	1	2	3	4	5	6	7	8	9	10		
	Q	S	P1	P1	;							

RA	Reads or sets the attenuator function status										Parameters: P1: "00": ATT OFF "01": ATT ON (20dB) P2: always "00"
Set	1	2	3	4	5	6	7	8	9	10	
	R	A	P1	P1	;						
Read	1	2	3	4	5	6	7	8	9	10	
	R	A	;								
Answer	1	2	3	4	5	6	7	8	9	10	
	R	A	P1	P1	P2	P2	;				

RC	Clears the RIT value										Parameters: None
Set	1	2	3	4	5	6	7	8	9	10	
	R	C	;								
Read											
Answer											

RD	Sets RIT to a negative value										Parameters: P1: negative value of RIT to set (from 0 to 50000Hz, max value subject to change) P2: always '1'
Set	1	2	3	4	5	6	7	8	9	10	
	R	D	P1	P1	P1	P1	P1	;			
Read	1	2	3	4	5	6	7	8	9	10	
	R	D	;								
Answer	1	2	3	4	5	6	7	8	9	10	
	R	D	P2	;							

RF	Reads or sets the reception filters values										Parameters: P1: (like MD command) '1': LSB '2': USB '3': CW '4': FM '5': AM '7': CWR P2: see parameter details below
Set	1	2	3	4	5	6	7	8	9	10	
	R	F	P1	P2	P2	;					
Read	1	2	3	4	5	6	7	8	9	10	
	R	F	P1	;							
Answer	1	2	3	4	5	6	7	8	9	10	
	R	F	P1	P2	P2	;					

RF command - P2 parameter

P2	MODE			
	LSB/USB	CW/CWR	AM	FM
00	1600Hz	-	2500Hz	Voice Narrow
01	1700Hz	-	3000Hz	Voice Wide
02	1800Hz	-	3500Hz	Data
03	1900Hz	-	4000Hz	-
04	2000Hz	-	4500Hz	-
05	2100Hz	-	5000Hz	-
06	2200Hz	-	5500Hz	-
07	2300Hz	100Hz & 4	6000Hz	-
08	2400Hz	100Hz & 3	-	-
09	2500Hz	100Hz & 2	-	-
10	2600Hz	100Hz & 1	-	-
11	2700Hz	100Hz	-	-
12	2800Hz	300Hz	-	-
13	2900Hz	500Hz	-	-
14	3000Hz	1000Hz	-	-
15	3100Hz	1500Hz	-	-
16	4000Hz	2600Hz	-	-
17	5000Hz	-	-	-
18	6000Hz	-	-	-
19	DATA 300Hz	-	-	-
20	DATA 600Hz	-	-	-
21	DATA 1000Hz	-	-	-

RI	Reads RSSI										Parameters: P1: '-' : negative value '+' : positive value '!' : unreliable value P2: RSSI absolute value
Set											
Read	1	2	3	4	5	6	7	8	9	10	
	R	I	;								
Answer	1	2	3	4	5	6	7	8	9	10	
	R	I	P1	P2	P2	P2	P2	;			

RN	Reads or sets the RIT step index										Parameters: P1: RIT step index '0': none '1': 1Hz '2': 5Hz '3': 10Hz '4': 25Hz '5': 50Hz '6': 100Hz '7': 250Hz '8': 500Hz '9': 1000Hz
Set	1	2	3	4	5	6	7	8	9	10	
	R	N	P1	;							
Read	1	2	3	4	5	6	7	8	9	10	
	R	N	;								
Answer	1	2	3	4	5	6	7	8	9	10	
	R	N	P1	;							

RT	Reads or sets the RIT function status										Parameters: P1: '0': RIT function OFF '1': RIT function ON
Set	1	2	3	4	5	6	7	8	9	10	
	R	T	P1	;							
Read	1	2	3	4	5	6	7	8	9	10	
	R	T	;								
Answer	1	2	3	4	5	6	7	8	9	10	
	R	T	P1	;							

RU	Sets RIT to a positive value										Parameters: P1: positive value of RIT to set (from 0 to 50000Hz, max value subject to change) P2: always '1'
Set	1	2	3	4	5	6	7	8	9	10	
	R	U	P1	P1	P1	P1	P1	;			
Read	1	2	3	4	5	6	7	8	9	10	
	R	U	;								
Answer	1	2	3	4	5	6	7	8	9	10	
	R	U	P2	;							

RV	Reads or sets the RIT value										Parameters: P1 '+' : positive o null value '-' : negative value P2: absolute value of RIT to set (from 0 to 50000Hz, max value subject to change)
Set	1	2	3	4	5	6	7	8	9	10	
	R	V	P1	P2	P2	P2	P2	P2	P2	;	
Read	1	2	3	4	5	6	7	8	9	10	
	R	V	;								
Answer	1	2	3	4	5	6	7	8	9	10	
	R	V	P1	P2	P2	P2	P2	P2	P2	;	

SA	Reads or sets the Tune Snap status										Parameters: P1: snap status '0': OFF '1': ON
Set	1	2	3	4	5	6	7	8	9	10	
	S	A	P1	;							
Read	1	2	3	4	5	6	7	8	9	10	
	S	A	;								
Answer	1	2	3	4	5	6	7	8	9	10	
	S	A	P1	;							

SE	Reads or sets the service mode status										Parameters: P1: always 1, force the service mode P2: always 0, if in service mode this CAT protocol is not available
Set	1	2	3	4	5	6	7	8	9	10	
	S	E	P1	;							
Read	1	2	3	4	5	6	7	8	9	10	
	S	E	;								
Answer	1	2	3	4	5	6	7	8	9	10	
	S	E	P2	;							

SI	Sets or reads the selected VFO step index										Parameters: P1: step index Steps list (in Hz): 1, 5, 10, 25, 50, 100, 250, 500, 1000, 2000, 3000, 4500, 5000, 7500, 9000, 10k, 12.5k, 25k, 50k, 100k, 125k, 250k, 500k, 1M.
Set	1	2	3	4	5	6	7	8	9	10	
	S	I	P1	;							
Read	1	2	3	4	5	6	7	8	9	10	
	S	I	;								
Answer	1	2	3	4	5	6	7	8	9	10	
	S	I	P1	;							

SM	Reads the S-meter status										Parameters: P1: always '0' P2: Meter Read "0000": S0 "0002": S1 "0003": S2 "0004": S3 "0005": S4 "0006": S5 "0008": S6 "0009": S7 "0010": S8 "0011": S9 "0012": S9+10 "0014": S9+20 "0016": S9+30 "0018": S9+40 "0020": S9+50 "0022": S9+60
Set	1	2	3	4	5	6	7	8	9	10	
Read	1	2	3	4	5	6	7	8	9	10	
	S	M	P1	;							
Answer	1	2	3	4	5	6	7	8	9	10	
	S	M	P1	P2	P2	P2	P2	;			

SN	Reads the receiver serial number										Parameters: P1: serial number
Set	1	2	3	4	5	6	7	8	9	10	
Read	1	2	3	4	5	6	7	8	9	10	
Answer	S	N	;								
	1	2	3	4	5	6	7	8	9	10	
	S	N	P1	P1	P1	P1	P1	P1	P1	P1	
	11	12	13	14	15	16	17	18	19	20	
	P1	P1	P1	P2	P2	P2	;				

SQ	Reads or sets the squelch value										Parameters: P1: always '0' P2: squelch value: 0: OFF 1-10: ON
Set	1	2	3	4	5	6	7	8	9	10	
Read	1	2	3	4	5	6	7	8	9	10	
Answer	S	Q	P1	;							
	1	2	3	4	5	6	7	8	9	10	
	S	Q	P1	P2	P2	P2	;				

TH	Reads or sets the AGC threshold value.										Parameters: P1: AGC threshold: "00" (OFF) ~ "10"
	See also GC and GS commands										
Set	1	2	3	4	5	6	7	8	9	10	
Read	T	H	P1	P1	;						
	1	2	3	4	5	6	7	8	9	10	
Answer	T	H	;								
	1	2	3	4	5	6	7	8	9	10	
	T	H	P1	P1	;						

UU	Activates the UI update mode										Parameters: P1: always '1' P2: "5214" P3: result '0' error '1' ok
Set	1	2	3	4	5	6	7	8	9	10	
Read	U	U	P1	P2	P2	P2	P2	;			
	1	2	3	4	5	6	7	8	9	10	
Answer	U	U	;								
	U	U	P3	;							

VA	Reads or sets the auxiliary volume										Parameters: P1: "000" ~ "100"
	See also VM command										
Set	1	2	3	4	5	6	7	8	9	10	
	V	A	P1	P1	P1	;					
Read	1	2	3	4	5	6	7	8	9	10	
	V	A	;								
Answer	1	2	3	4	5	6	7	8	9	10	
	V	A	P1	P1	P1	;					

VE	Do VFOs equal										Parameters: P1: '1': set the VFO not active with the parameters of the active VFO and change VFO '2': set the active VFO with the VFO parameters not active, it does not change VFO P2: always '0'
	Set is not allowed if MEM mode is active.										
Set	1	2	3	4	5	6	7	8	9	10	
	V	E	P1	;							
Read											
Answer	1	2	3	4	5	6	7	8	9	10	
	V	E	P2	;							

VM	Reads or sets the main volume										Parameters: P1: "000" ~ "015" "020" ~ "100" in 5 dots step
	See also VA command										
Set	1	2	3	4	5	6	7	8	9	10	
	V	M	P1	P1	P1	;					
Read	1	2	3	4	5	6	7	8	9	10	
	V	M	;								
Answer	1	2	3	4	5	6	7	8	9	10	
	V	M	P1	P1	P1	;					

VS	Reads the FDM-DUOr firmware versions										Parameters: P1: firmware version to read 'I': User Interface 'F': FPGA 'U': USB audio 'R': Rx Demodulator P2: firmware version in the format "xx.yy" with : - "xx" major number - "yy" minor number
Set											
Read	1	2	3	4	5	6	7	8	9	10	
	V	S	P1	;							
Answer	1	2	3	4	5	6	7	8	9	10	
	V	S	P1	P2	P2	P2	P2	P2	;		

7.3.3 Compatibility commands

The following commands have no effect on the receiver, they only ensure the compatibility of the FDM-DUOr with Ham Radio Deluxe.

AC											Parameters: P1: Always 00 P2: Always 0
Set	1	2	3	4	5	6	7	8	9	10	
Read	1	2	3	4	5	6	7	8	9	10	
	A	C	;								
Answer	1	2	3	4	5	6	7	8	9	10	
	A	C	P1	P1	P2	;					

AG											Parameters: P1: Always 0 P2: Always 000
Set	1	2	3	4	5	6	7	8	9	10	
Read	1	2	3	4	5	6	7	8	9	10	
	A	G	P1	;							
Answer	1	2	3	4	5	6	7	8	9	10	
	A	G	P1	P2	P2	P2;					

AI											Parameters: P1: Always 0
Set	1	2	3	4	5	6	7	8	9	10	
Read	1	2	3	4	5	6	7	8	9	10	
	A	I	P1	;							
Answer	1	2	3	4	5	6	7	8	9	10	
	A	I	P1	;							

AN											Parameters: P1: Always 1
Set	1	2	3	4	5	6	7	8	9	10	
Read	1	2	3	4	5	6	7	8	9	10	
	A	N	;								
Answer	1	2	3	4	5	6	7	8	9	10	
	A	N	P1	;							

BC											Parameters: P1: Always 0
Set	1	2	3	4	5	6	7	8	9	10	
Read	1	2	3	4	5	6	7	8	9	10	
	B	C	;								
Answer	1	2	3	4	5	6	7	8	9	10	
	B	C	P1	;							

BY											Parameters: P1: Always 0 P2: Always 0
Set	1	2	3	4	5	6	7	8	9	10	
Read	1	2	3	4	5	6	7	8	9	10	
	B	Y	;								
Answer	1	2	3	4	5	6	7	8	9	10	
	B	Y	P1	P2	;						

CA											Parameters: P1: Always 0
Set	1	2	3	4	5	6	7	8	9	10	
Read	1	2	3	4	5	6	7	8	9	10	
	C	A	;								
Answer	1	2	3	4	5	6	7	8	9	10	
	C	A	P1	;							

CN											Parameters: P1: Always 00
Set	1	2	3	4	5	6	7	8	9	10	
Read	1	2	3	4	5	6	7	8	9	10	
	C	N	;								
Answer	1	2	3	4	5	6	7	8	9	10	
	C	A	P1	P1	;						

CT											Parameters: P1: Always 0
Set	1	2	3	4	5	6	7	8	9	10	
Read	1	2	3	4	5	6	7	8	9	10	
	C	T	;								
Answer	1	2	3	4	5	6	7	8	9	10	
	C	T	P1	;							

DL											Parameters: P1: Always 0 P2: Always 00
Set	1	2	3	4	5	6	7	8	9	10	
Read	1	2	3	4	5	6	7	8	9	10	
	D	L	;								
Answer	1	2	3	4	5	6	7	8	9	10	
	D	L	P1	P2	P2	;					

EX											Parameters: P1: 000 - 060: Menu No. P2: Always 00 P3: Always 0 P4: Always 0 P5: Always 0
Set	1	2	3	4	5	6	7	8	9	10	
Read	1	2	3	4	5	6	7	8	9	10	
	E	X	P1	P1	P1	P2	P2	P3	P4	;	
Answer	1	2	3	4	5	6	7	8	9	10	
	E	X	P1	P1	P1	P2	P2	P3	P4	P5	
	11	12	13	14	15	16	17	18	19	20	
	P5	;									

FS											Parameters: P1 Always 0
Set	1	2	3	4	5	6	7	8	9	10	
Read	1	2	3	4	5	6	7	8	9	10	
	F	S	;								
Answer	1	2	3	4	5	6	7	8	9	10	
	F	S	P1	;							

FW											Parameters: P1 Always 0000
Set	1	2	3	4	5	6	7	8	9	10	
Read	1	2	3	4	5	6	7	8	9	10	
	F	W	;								
Answer	1	2	3	4	5	6	7	8	9	10	
	F	W	P1	P1	P1	P1	;				

GT											Parameters: P1 Always 000
Set	1	2	3	4	5	6	7	8	9	10	
Read	1	2	3	4	5	6	7	8	9	10	
	G	T	;								
Answer	1	2	3	4	5	6	7	8	9	10	
	G	T	P1	P1	P1	;					

ID											Parameters: P1: 020
Set	1	2	3	4	5	6	7	8	9	10	
Read	1	2	3	4	5	6	7	8	9	10	
	I	D	;								
Answer	1	2	3	4	5	6	7	8	9	10	
	I	D	P1	P1	P1	;					

IS											Parameters: P1: "+" P2: Always 0000
Set	1	2	3	4	5	6	7	8	9	10	
Read	1	2	3	4	5	6	7	8	9	10	
	I	S	;								
Answer	1	2	3	4	5	6	7	8	9	10	
	I	S	P1	P2	P2	P2	P2	;			

KS											Parameters: P1: 010
Set	1	2	3	4	5	6	7	8	9	10	
Read	1	2	3	4	5	6	7	8	9	10	
	K	S	;								
Answer	1	2	3	4	5	6	7	8	9	10	
	K	S	P1	P1	P1	;					

MF											Parameters: P1: Always 0
Set	1	2	3	4	5	6	7	8	9	10	
Read	1	2	3	4	5	6	7	8	9	10	
	M	F	;								
Answer	1	2	3	4	5	6	7	8	9	10	
	M	F	P1	;							

MG											Parameters: P1: Always 000
Set	1	2	3	4	5	6	7	8	9	10	
Read	1	2	3	4	5	6	7	8	9	10	
	M	G	;								
Answer	1	2	3	4	5	6	7	8	9	10	
	M	G	P1	P1	P1	;					

NL											Parameters: P1: Always 000
Set	1	2	3	4	5	6	7	8	9	10	
Read	1	2	3	4	5	6	7	8	9	10	
	N	L	;								
Answer	1	2	3	4	5	6	7	8	9	10	
	N	L	P1	P1	P1	;					

PA											Parameters: P1: Always 0 P2: Always 0
Set	1	2	3	4	5	6	7	8	9	10	
Read	1	2	3	4	5	6	7	8	9	10	
	P	A	;								
Answer	1	2	3	4	5	6	7	8	9	10	
	P	A	P1	P2	;						

PC											Parameters: P1: Always 005
Set	1	2	3	4	5	6	7	8	9	10	
Read	1	2	3	4	5	6	7	8	9	10	
	P	C	;								
Answer	1	2	3	4	5	6	7	8	9	10	
	P	C	P1	P1	P1	;					

PR											Parameters: P1: Always 0
Set	1	2	3	4	5	6	7	8	9	10	
Read	1	2	3	4	5	6	7	8	9	10	
	P	R	;								
Answer	1	2	3	4	5	6	7	8	9	10	
	P	R	P1	;							

PS											Parameters: P1: Always 1
Set	1	2	3	4	5	6	7	8	9	10	
Read	1	2	3	4	5	6	7	8	9	10	
	P	S	;								
Answer	1	2	3	4	5	6	7	8	9	10	
	P	S	P1	;							

QR											Parameters: P1: Always 0 P2: Always 0
Set	1	2	3	4	5	6	7	8	9	10	
Read	1	2	3	4	5	6	7	8	9	10	
	Q	R	;								
Answer	1	2	3	4	5	6	7	8	9	10	
	Q	R	P1	P2	;						

RA											Parameters: P1: Always 00 P2: Always 00
Set	1	2	3	4	5	6	7	8	9	10	
Read	1	2	3	4	5	6	7	8	9	10	
	R	A	;								
Answer	1	2	3	4	5	6	7	8	9	10	
	R	A	P1	P1	P2	P2	;				

RG											Parameters: P1: Always 000
Set	1	2	3	4	5	6	7	8	9	10	
Read	1	2	3	4	5	6	7	8	9	10	
	R	G	;								
Answer	1	2	3	4	5	6	7	8	9	10	
	R	G	P1	P1	P1	;					

RL											Parameters: P1: Always 00
Set	1	2	3	4	5	6	7	8	9	10	
Read	1	2	3	4	5	6	7	8	9	10	
	R	L	;								
Answer	1	2	3	4	5	6	7	8	9	10	
	R	L	P1	P1	;						

RM											Parameters: P1: Always 1 P2: Always 0001
Set	1	2	3	4	5	6	7	8	9	10	
Read	1	2	3	4	5	6	7	8	9	10	
	R	M	;								
Answer	1	2	3	4	5	6	7	8	9	10	
	R	M	P1	P2	P2	P2	P2	;			

SD											Parameters: P1: Always 0000
Set	1	2	3	4	5	6	7	8	9	10	
Read	1	2	3	4	5	6	7	8	9	10	
	S	D	;								
Answer	1	2	3	4	5	6	7	8	9	10	
	S	D	P1	P1	P1	P1	;				

SH											Parameters: P1: Always 00
Set	1	2	3	4	5	6	7	8	9	10	
Read	1	2	3	4	5	6	7	8	9	10	
	S	H	;								
Answer	1	2	3	4	5	6	7	8	9	10	
	S	H	P1	P1	;						

SL											Parameters: P1: Always 00
Set	1	2	3	4	5	6	7	8	9	10	
Read	1	2	3	4	5	6	7	8	9	10	
	S	H	;								
Answer	1	2	3	4	5	6	7	8	9	10	
	S	H	P1	P1	;						

SQ											Parameters: P1: Always 0 P2: Always 000
Set	1	2	3	4	5	6	7	8	9	10	
Read	1	2	3	4	5	6	7	8	9	10	
	S	Q	P1	;							
Answer	1	2	3	4	5	6	7	8	9	10	
	S	Q	P1	P2	P2	P2	;				

TN											Parameters: P1: Always 00
Set	1	2	3	4	5	6	7	8	9	10	
Read	1	2	3	4	5	6	7	8	9	10	
	T	N	;								
Answer	1	2	3	4	5	6	7	8	9	10	
	T	N	P1	P1	;						

TO											Parameters: P1: Always 0
Set	1	2	3	4	5	6	7	8	9	10	
Read	1	2	3	4	5	6	7	8	9	10	
	T	O	;								
Answer	1	2	3	4	5	6	7	8	9	10	
	T	O	P1	;							

TS											Parameters: P1: Always 0
Set	1	2	3	4	5	6	7	8	9	10	
Read	1	2	3	4	5	6	7	8	9	10	
	T	S	;								
Answer	1	2	3	4	5	6	7	8	9	10	
	T	S	P1	;							

VD											Parameters: P1: Always 0000
Set	1	2	3	4	5	6	7	8	9	10	
Read	1	2	3	4	5	6	7	8	9	10	
	V	D	;								
Answer	1	2	3	4	5	6	7	8	9	10	
	V	D	P1	P1	P1	P1	;				

VG											Parameters: P1: Always 000
Set	1	2	3	4	5	6	7	8	9	10	
Read	1	2	3	4	5	6	7	8	9	10	
	V	G	;								
Answer	1	2	3	4	5	6	7	8	9	10	
	V	G	P1	P1	P1	;					

VX											Parameters: P1: Always 0
Set	1	2	3	4	5	6	7	8	9	10	
Read	1	2	3	4	5	6	7	8	9	10	
	V	X	;								
Answer	1	2	3	4	5	6	7	8	9	10	
	V	X	P1	;							

8 Software & Drivers Installation

8.1 FDM-SW2 Software

8.1.1 First-time install

Download from the ELAD website <https://www.eladit.com/en/download?path=sdr%2FFDM-sw2+Software%2FCurrent+release> the latest **Complete** version. Double-click on the file “setup.exe” inside the folder and follow the instructions. Windows Installer will first install the prerequisites “Microsoft VC++ 2010 Runtime Libraries” and “Microsoft .NET Framework 4.0” and then the FDM-SW2 software.

8.1.2 Update an existing version

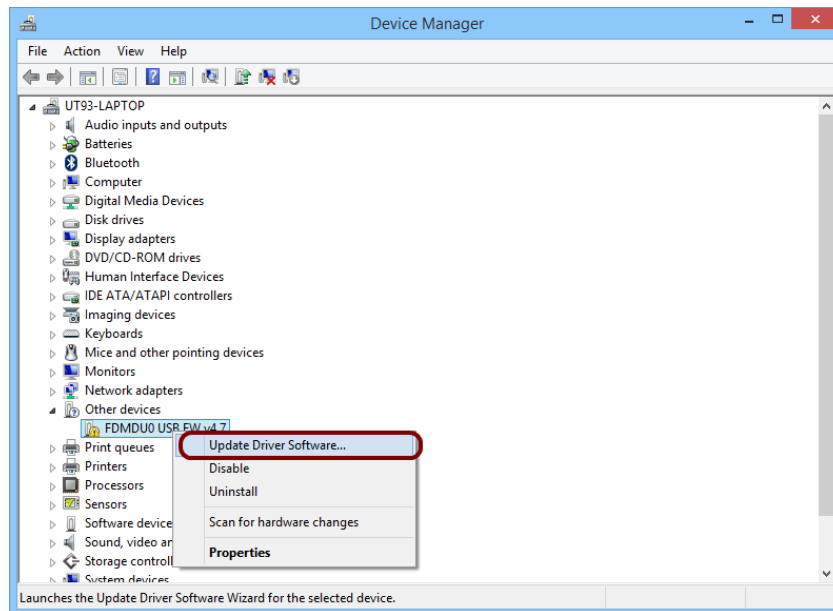
Download from the ELAD website <https://www.eladit.com/en/download?path=sdr%2FFDM-sw2+Software%2FCurrent+release> the latest **Only Installer** version. Double click on file “ELAD_FDMSW2Setup_v_x.y.msi” included in the update and follow the instructions.

8.2 RX USB Driver

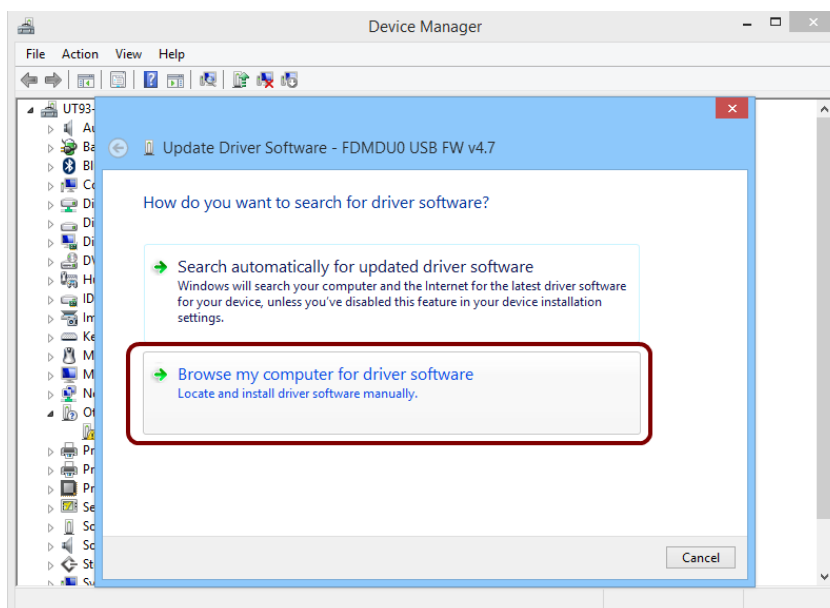
8.2.1 First driver installation

To install the RX USB driver, connect the RX USB port of the FDM-DUOr to a USB port of your computer and power on the FDM-DUOr. When Windows detects the new hardware, follow the steps listed below to install the driver correctly :

Open the **Device Manager**, expand **Other devices** and locate the FDM-DUO node. Select FDM-DUO, right click on it and execute **Update Driver Software**.



When Windows starts the installation procedure, select the option **Browse my computer for driver software** (the second option).

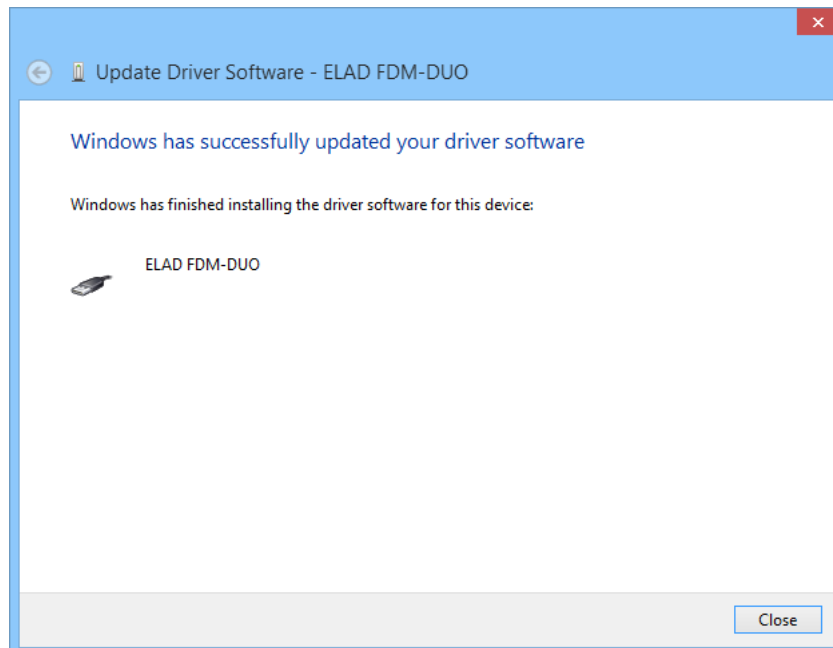


In the next window, insert the driver folder location using the **Browse** button and check the option **Include subfolders**, in this way the manual driver search is enabled. Select the folder: **C:\Program Files (x86)\ELAD\ELAD FDM-SW2\ELAD_FDM_Driver** then click **Next**.

Click **Install**.



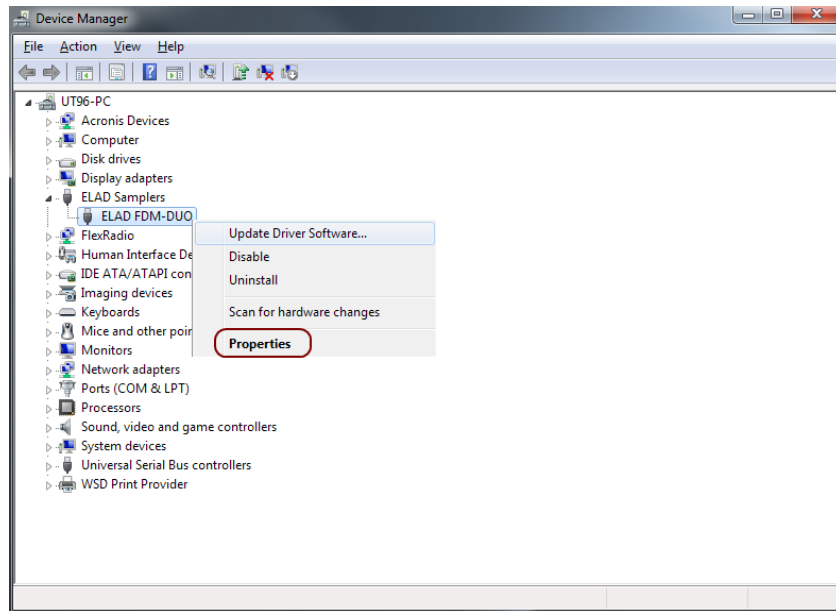
Let the hardware installation complete automatically.



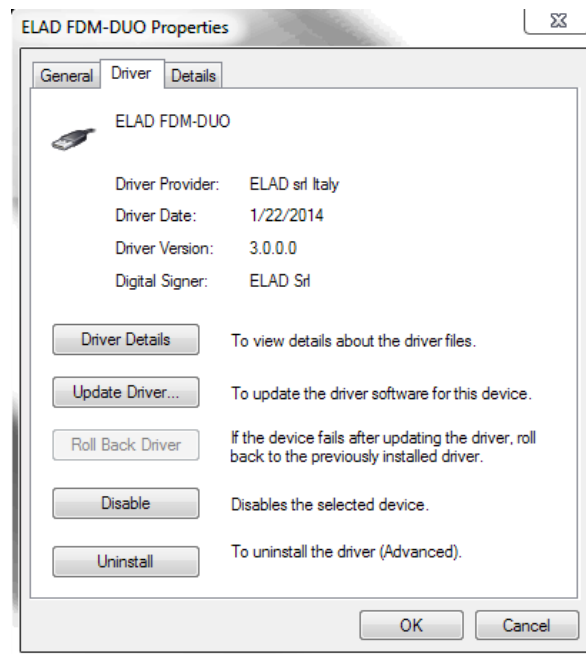
At the procedure ending, click on **Close**, then disconnect and reconnect the FDM-DUOr on the same USB port. Now the RX USB driver of the FDM-DUOr is installed on your computer.

8.2.2 Driver installation check

To check the driver current version, connect the FDM-DUOr to the computer USB port where the driver is already installed and power on the FDM-DUOr. Open the **Device Manager**, expand the **ELAD Samplers** node, right click on **ELAD FDM-DUO** and select **Properties**.

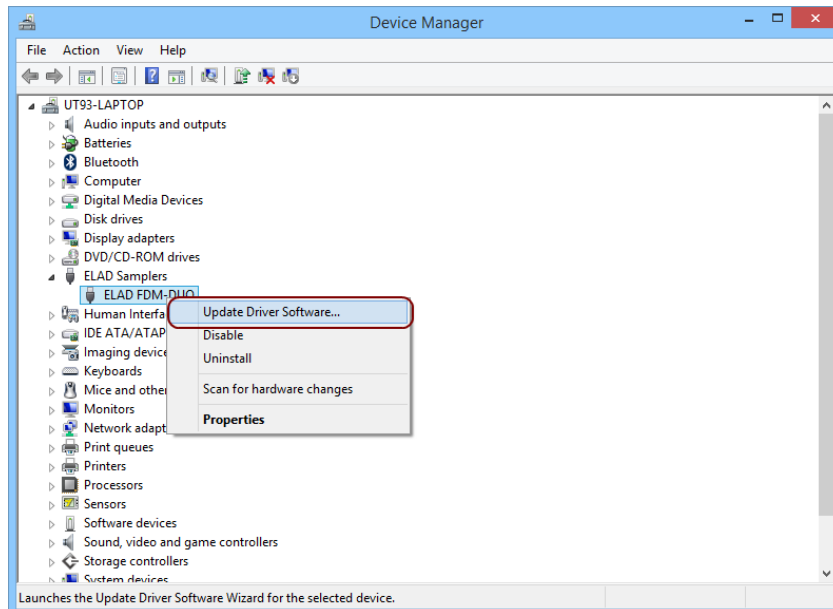


When the window opens, select the **Driver** tab. You can read provider name, current driver release date and current driver version. The picture below gives an example.

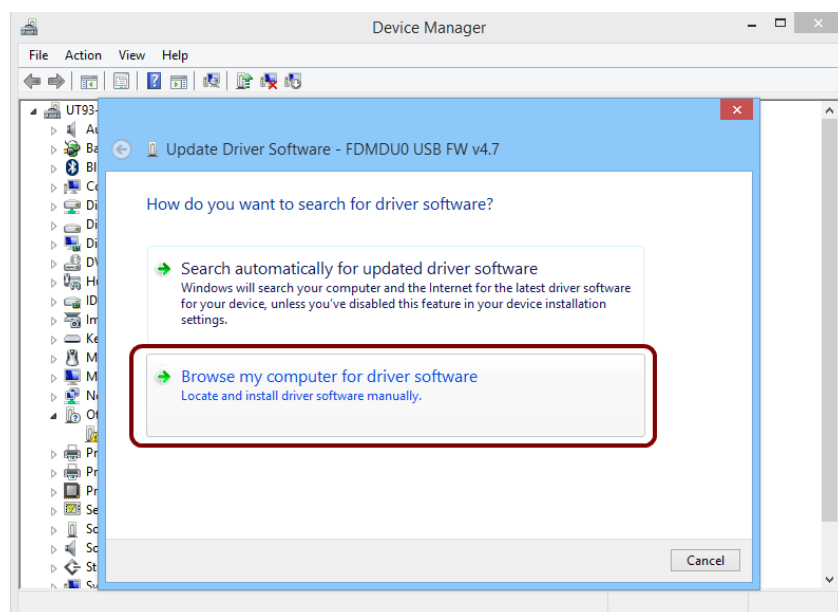


8.2.3 Manual driver update

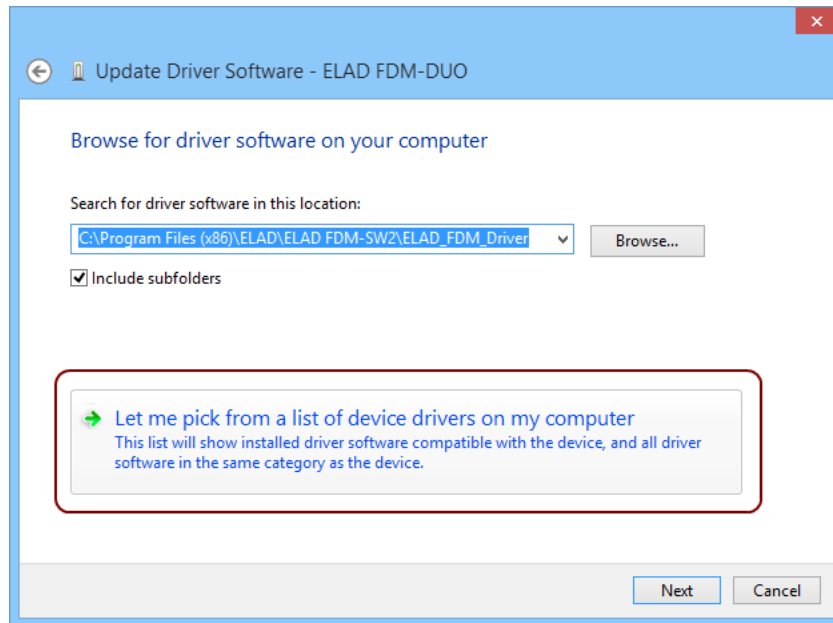
To update the driver, connect the FDM-DUOr to the computer USB port where the driver is already installed and power on the FDM-DUOr. Open the **Device Manager**, expand the **ELAD Samplers** node, right click on **ELAD FDM-DUO** and execute **Update Driver Software**.



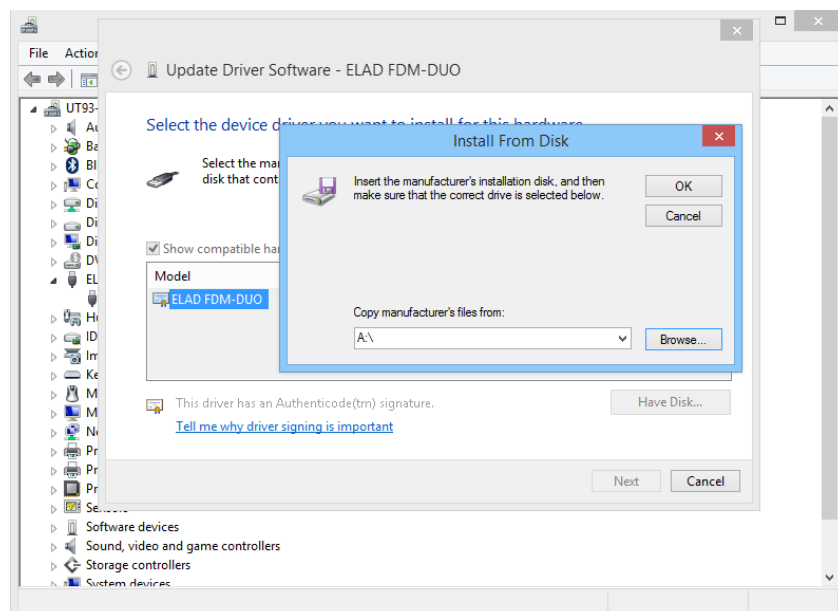
When Windows starts the installation procedure, select the option **Browse my computer for driver software**.



In the next window, disable the option **Include subfolders** and choose **Let me pick from a list of device drivers on my computer**. Don't click Next.

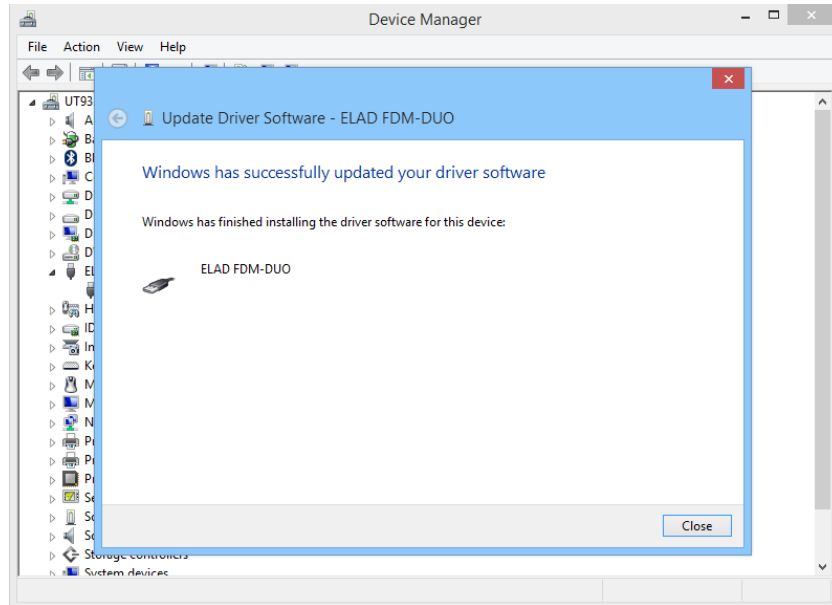


Verify that **Show compatible hardware** option is checked and ELAD FDM-DUOr is selected, then click on **Have a Disk**. In this way the manual driver update is enabled. Don't click Next.



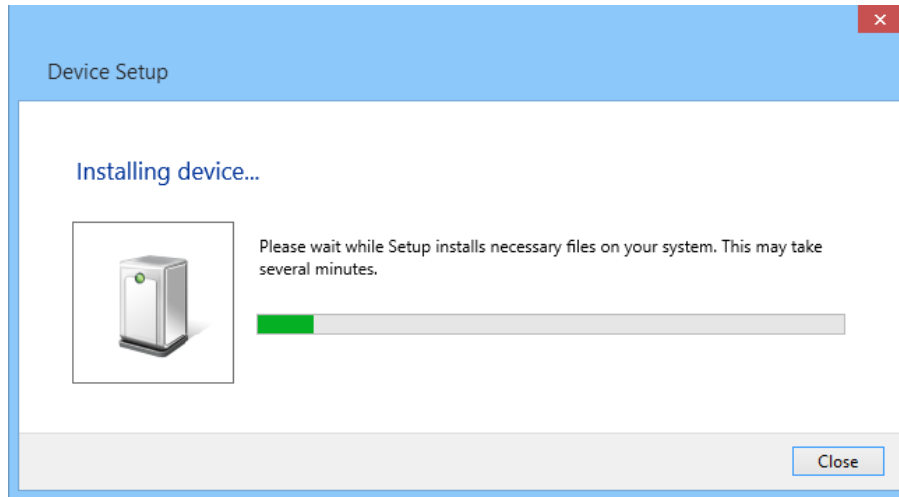
Click on **Browse** and search for the FDM-DUOr driver update folder location, then open `winusb_fdmsampler.inf` file. Click **OK** and then **Next**.

Let the hardware installation complete automatically, at the procedure ending click on **Close**, then disconnect and reconnect the FDM-DUOr device on the same USB port.

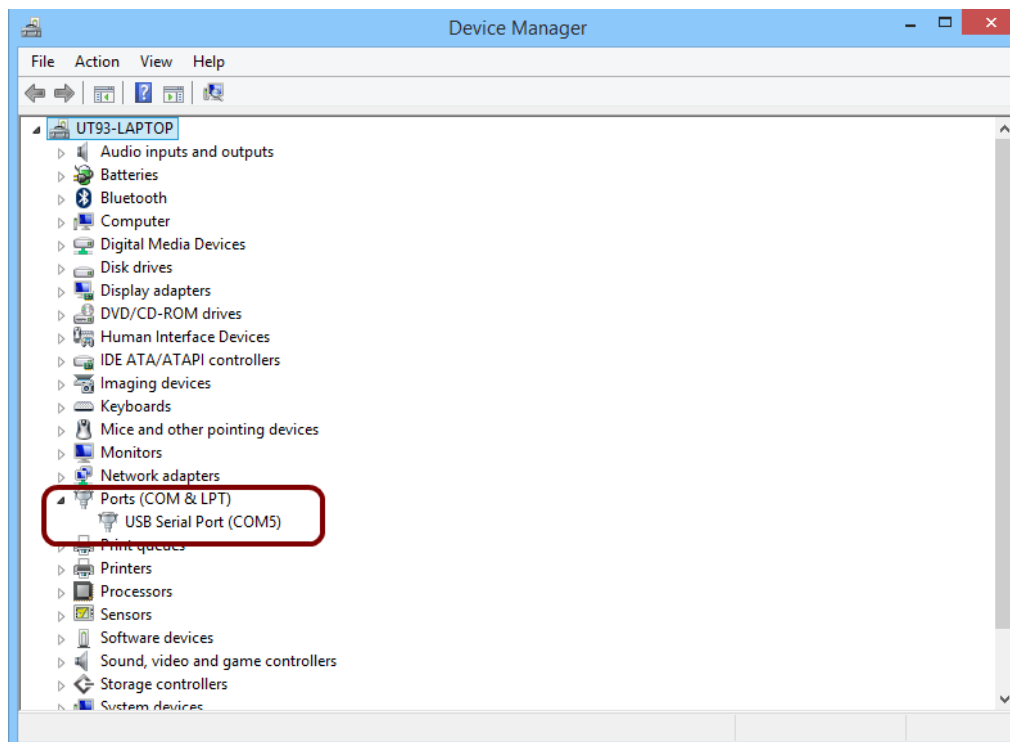


8.3 CAT USB Driver

Connect the CAT USB port of the FDM-DUOr to a USB port of your computer. Windows download and install automatically the FTDI FT232R serial port driver.



When the installation process ends, open the Windows Device Manager and check for the FDM-DUOr USB serial port in the node **Ports (COM & LPT)**.



9 Firmware Update

This section was removed from this manual. Please download the specific documentation about firmware update here: <https://www.eladit.com/en/download?path=sdr%2FFDM-DUOr>.

10 Technical Specifications

ELAD FDM-DUOr TECHNICAL SPECIFICATIONS			Rev. 1 10/2015
GENERAL	USB 2.0 Ports (Peripheral Control)	2 (RX, CAT)	
	Master Clock Frequency	122.88 MHz	
	Master Clock Phase Noise	-136 dBc @ 100 kHz, -130 dBc @ 10 kHz	
	10 MHz Reference Clock Stability	2.5 ppm TCXO within temperature range 0°C ÷ 40°C (32°F ÷ 104°F) Typical Stability within temperature range 15°C ÷ 35°C (59°F ÷ 95°F) 0.1 ppm i.e. 1Hz @ 10 MHz	
	Frequency Resolution	1 Hz min.	
	Antenna Connectors / Impedance	2x SO-239 / 50 Ohm	
	Power Supply Requirements	13.8 Vdc ± 10%	
	Current Drain	<500 mA @ 13.8 V	
	Dimensions (W x D x H)	180 mm (7.00") x 155 mm (6.10") x 70 mm (2.75") including knob and connectors 180 mm (7.00") x 130 mm (5.10") x 70 mm (2.75") enclosure only	
	Weight (approximate)	1.2 Kg (2.4 lb)	
Operating Temperature Range	0°C ÷ 40°C (32°F ÷ 104°F)		
Stand Alone Mode	Modes	CW, USB, LSB, AM, FM	
	ADC Sampling Rate / Resolution	122.88 MHz @ 16 bits	
	Wideband Frequency Coverage	10 kHz ÷ 54 MHz	
	IQ Channel Bandwidth	192 kHz (24 bits)	
	MDS @14.200MHz (BW 500Hz)	-132dBm	
	Typ. 3 rd order IMD DR (injection of a third signal strong and off frequency)	92dB	
	Attenuator	10dB / 20dB / 30dB	
	Spurious Response	>105 dBfs @ 0 dB attenuation	
	DDC Image Rejection Ratio	>100 dB	
	Receive Low Pass Filters Bandwidth	SSB: 300 Hz, 600 Hz, 1 kHz, 1.6 kHz ÷ 3.1 kHz (Step 100 Hz), 4 kHz, 5 kHz, 6 kHz AM: 2.5 kHz ÷ 6 kHz (Step 500 Hz) CW: 100 Hz & DR ⁽¹⁾ Level 1 ÷ 4, 100 Hz, 300 Hz, 500 Hz, 1kHz, 1.5 kHz, 2.6 kHz FM: Voice Narrow, Voice Wide, Data	
Headphones Connectors (front & rear) / Impedance	3.5 mm Stereo Jack / 8 Ohm		
AUX OUT Connector / Impedance	3.5 mm Stereo Jack / 8 Ohm		
PC Based Mode (ELAD FDM-SW2 Software)	Modes	CW, CW SH+, CW SH-, CW Narrow Band, USB, LSB, AM, FM, WB FM (Stereo + RDS), SYNC AM, DSB, RTTY, ECSS, DRM	
	IQ DDC Sampling Rate / Resolution	1 Channel (Slice) @ 32 bits: 192 kHz, 384 kHz, 768 kHz, 1536 kHz, 3072 kHz 1 Channel (Slice) @ 16 bits: 6144 kHz 2 Channels (Slices) @ 32 bits: 192 kHz, 384 kHz	
	Simultaneous Receivers	4 with 1 Channel (Slice) DDC, 8 with 2 Channels (Slices) DDC	
	Software Defined Filters	Double IF Notch Filters, Continuous Variable Band Filter	
	Advanced DSP Features	Noise Blanker, Adaptive Noise Reducer, Adaptive Auto Notch, AGC	
	Main Software Features	Recording and playback of IF and audio data stream, EIBI database support, Dx-Cluster spot visualization (Internet connection required), built in CAT protocol and Omni-Rig Server, double output channel (for VAC), support for external down-converter, WoodBox Tmate and Tmate2 compatibility	
	Software Visualization	Input Data (Spectrum + Waterfall), IF Data (Spectrum + Waterfall), Audio Data (Spectrum + Waterfall)	
<small>(1) Digital Resonator</small>			
<small>All stated specifications and other product information provided in this document are subject to change without notice or obligation.</small>			

Product Warranty

ELAD S.r.l. warrants the FDM-DUOr for a period of 2 years inside Europe, and for a period of 1 year outside Europe unless otherwise specified. Warranty begins from the purchase date. All FDM-DUOr will be repaired or replaced due to malfunction resulting from no fault of the end user. This warranty covers normal intended usage of the product and does not cover misuse, abuse, accidents, viruses, unauthorized service parts or the combination of other unauthorized branded products used in conjunction with the FDM-DUOr.

Declaration of Conformity (EC)

The product marked as

FDM-DUOr

manufactured by

Manufacturer : ELAD S.r.l.
 Address : Via Col De Rust, 11
 I-33070 CANEVA (PN)

is produced in conformity to the requirements contained in the following EC directives :

- Radio equipment Directive 2014/53/EU
- EMC Directive 2014/30/EU
- Low Voltage Directive 2014/35/EU
- RoHS Directive 2011/65/EU

The product conforms to the following product specifications :

Radio, Emissions & Immunity :

EN 301 489-1 V2.2.3 (2019-11)
 EN 301 489-15 V2.2.1 (2019-04)
 EN 301 783 V2.1.1 (2016-01)
 EN 55032:2015/A11:2020
 EN 55035:2017/A11:2020

Safety :

EN 62368-1:2014

and further amendments.

This declaration is under responsibility of the manufacturer

ELAD S.r.l.
 Via Col De Rust, 11
 I-33070 CANEVA (PN)

Issued by

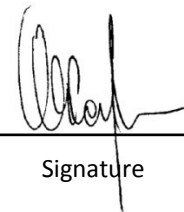
Name : Franco Milan
 Function : President of ELAD S.r.l.

CANEVA

Place

May, 28th 2021

Date



Signature